

À des fins de recherche uniquement

Anticorps Monoclonal anti-vwf

Numéro de catalogue: CL594-66682



Informations de base

Numéro de catalogue:

CL594-66682

Taille:

100ul , Concentration: 1000 µg/ml by Nanodrop;

Hôte:

Mouse

Isotype:

IgG1

Immunogen Catalog Number:

AG25578

Numéro d'acquisition GenBank:

Identification du gène (NCBI):

7450

Nom complet:

von Willebrand factor

Méthode de purification:

Purification par protéine G

CloneNo.:

3F9F3

Dilutions recommandées:

IF 1:50-1:500

Excitation/Emission maxima wavelengths:

588 nm / 604 nm

Applications

Applications testées:

IF

Spécificité de l'espèce:

Humain

Contrôles positifs:

IF : tissu de cancer du sein humain,

Informations générales

Von Willebrand factor (VWF) is a large multimeric glycoprotein found in blood plasma involved in hemostasis following vascular injury. Due to the multimeric nature of VWF, it can range in size from 500 to 20,000 kDa due to the differences in the number of subunits comprising the protein. Each subunit is approximately 250 kDa (PMID: 9759493). The biosynthesis of VWF in vivo is limited to endothelial cells (PMID: 4209883) and megakaryocytes (PMID: 2413071). VWF synthesized in endothelial cells is either released directly into the plasma via 27186a secretory pathway, or tubulized and stored in organelles unique to this cell type called Weibel-Palade bodies (PMID: 16459301). Whereas VWF synthesized in megakaryocytes is stored in the alpha granules of platelets (PMID: 2046403). The primary function of VWF is as an adhesive plasma glycoprotein, particularly factor VIII; an essential blood-clotting protein (PMID: 6982084). VWF is also important in platelet adhesion to wound sites by binding specifically to type I and type III collagen (PMID: 11098050), with larger VWF multimers being most effective (PMID: 24448155).

Stockage

Stockage:

Stocker à -20 °C. Éviter toute exposition à la lumière.

Tampon de stockage:

PBS avec glycérol à 50 %, Proclin300 à 0,05 % et BSA à 0,5 %, pH 7,3.

L'aliquotage n'est pas nécessaire pour le stockage à -20C

***** Les 20ul contiennent 0,1% de BSA.**

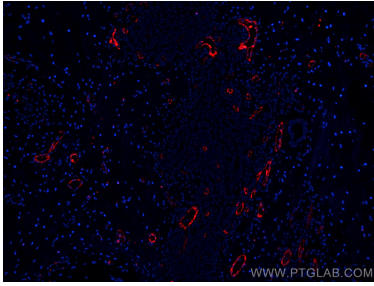
For technical support and original validation data for this product please contact:

T: 1 (888) 4PTGLAB (1-888-478-4522) (toll free in USA), or 1(312) 455-8498 (outside USA)

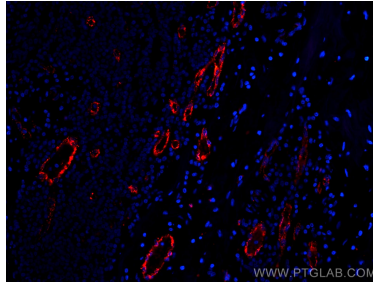
E: proteintech@ptglab.com
W: ptglab.com

This product is exclusively available under Proteintech Group brand and is not available to purchase from any other manufacturer.

Données de validation sélectionnées



Immunofluorescent analysis of (4% PFA) fixed human breast cancer tissue using CoraLite®594 vwf antibody (CL594-66682, Clone: 3F9F3) at dilution of 1:200.



Immunofluorescent analysis of (4% PFA) fixed human breast cancer tissue using CoraLite®594 vwf antibody (CL594-66682, Clone: 3F9F3) at dilution of 1:200.