

À des fins de recherche uniquement

Anticorps Monoclonal anti-GLUT4

Numéro de catalogue: CL594-66846



Informations de base

Numéro de catalogue: CL594-66846	Numéro d'acquisition GenBank: BC069615	Méthode de purification: Purification par protéine A
Taille: 100ul , Concentration: 1000 µg/ml by Nanodrop;	Identification du gène (NCBI): 6517	CloneNo.: 3G7C9
Hôte: Mouse	Nom complet: solute carrier family 2 (facilitated glucose transporter), member 4	Dilutions recommandées: IF 1:50-1:500
Isotype: IgG2b	MW calculé 509 aa, 55 kDa	Excitation/Emission maxima wavelengths: 588 nm / 604 nm
Immunogen Catalog Number: AG15390	MW observés: 48-50 kDa	

Applications

Applications testées: FC (Intra), IF	Contrôles positifs: IF : cellules HeLa,
Spécificité de l'espèce: Humain, porc, rat, souris	

Informations générales

GLUT4 is a member of GLUT family of transmembrane hexose transporters. It is an INS receptor that mediates INS-stimulated glucose transport in fat and muscle where it is predominantly expressed. In response to INS stimulation, GLUT4 experienced translocation from trans-Golgi network to plasma membrane. The impairment of GLUT4 translocation is associated with diabetes.

Stockage

Stockage:
Stocker à -20 °C. Éviter toute exposition à la lumière. Stable pendant un an après l'expédition.
Tampon de stockage:
PBS avec glycérol à 50 %, Proclin300 à 0,05 % et BSA à 0,5 %, pH 7,3.
L'aliquotage n'est pas nécessaire pour le stockage à -20C

***** Les 20ul contiennent 0,1% de BSA.**

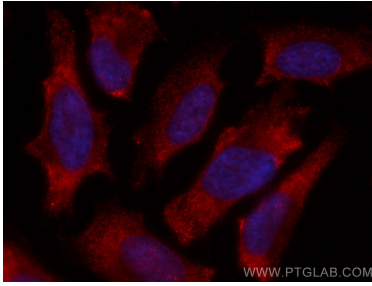
For technical support and original validation data for this product please contact:

T: 1 (888) 4PTGLAB (1-888-478-4522) (toll free
in USA), or 1(312) 455-8498 (outside USA)

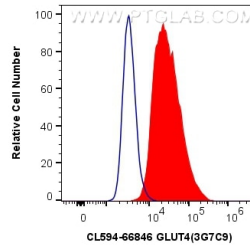
E: proteintech@ptglab.com
W: ptglab.com

This product is exclusively available under Proteintech Group brand and is not available to purchase from any other manufacturer.

Données de validation sélectionnées



Immunofluorescent analysis of (-20°C Ethanol) fixed HeLa cells using CoraLite®594 GLUT4 antibody (CL594-66846, Clone: 3G7C9) at dilution of 1:200.



1X10⁶ HEK-293 cells were intracellularly stained with 0.4 ug CoraLite®594 Anti-Human GLUT4 (CL594-66846, Clone:3G7C9) (red), or 0.4 ug Mouse IgG2b Isotype Control (CL594-66360-3, Clone: K11B8C4B5) (blue). Cells were fixed with 4% PFA and permeabilized with Flow Cytometry Perm Buffer (PF00011-C).