

À des fins de recherche uniquement

Anticorps Monoclonal anti-SMC1A

Numéro de catalogue: CL594-66987



Informations de base

Numéro de catalogue: CL594-66987	Numéro d'acquisition GenBank: BC112127	Méthode de purification: Purification par protéine A
Taille: 100ul , Concentration: 1000 µg/ml by Nanodrop;	Identification du gène (NCBI): 8243	CloneNo.: 1A5D2
Hôte: Mouse	Nom complet: structural maintenance of chromosomes 1A	Dilutions recommandées: IF 1:50-1:500
Isotype: IgG2b	MW calculé 1233 aa, 143 kDa	Excitation/Emission maxima wavelengths: 588 nm / 604 nm
Immunogen Catalog Number: AG17257	MW observés: 150 kDa	

Applications

Applications testées: IF	Contrôles positifs: IF : tissu de cancer du côlon humain,
Spécificité de l'espèce: Humain, rat, souris	

Informations générales

Structural maintenance of chromosomes protein 1A (SMC1A) is involved in chromosome cohesion during cell cycle and in DNA repair. It is a central component of cohesin complex which is required for the cohesion of sister chromatids after DNA replication. The cohesin complex apparently forms a large proteinaceous ring within which sister chromatids can be trapped. At anaphase, the complex is cleaved and dissociates from chromatin, allowing sister chromatids to segregate. The cohesin complex may also play a role in spindle pole assembly during mitosis. Involved in DNA repair via its interaction with BRCA1 and its related phosphorylation by ATM, or via its phosphorylation by ATR. Works as a downstream effector both in the ATM/NBS1 branch and in the ATR/MSH2 branch of S-phase checkpoint.

Stockage

Stockage:
Stocker à -20 °C. Éviter toute exposition à la lumière.
Tampon de stockage:
PBS avec glycérol à 50 %, Proclin300 à 0,05 % et BSA à 0,5 %, pH 7,3.
L'aliquotage n'est pas nécessaire pour le stockage à -20C

***** Les 20ul contiennent 0,1% de BSA.**

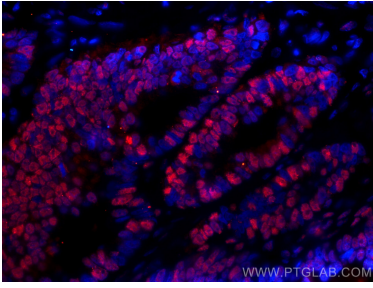
For technical support and original validation data for this product please contact:

T: 1 (888) 4PTGLAB (1-888-478-4522) (toll free
in USA), or 1(312) 455-8498 (outside USA)

E: proteintech@ptglab.com
W: ptglab.com

This product is exclusively available under Proteintech Group brand and is not available to purchase from any other manufacturer.

Données de validation sélectionnées



Immunofluorescent analysis of (4% PFA) fixed human colon cancer tissue using CoraLite®594 SMC1A antibody (CL594-66987, Clone: 1A5D2) at dilution of 1:200.