

À des fins de recherche uniquement

Anticorps Monoclonal anti-MAP2

Numéro de catalogue: CL594-67015



Informations de base

Numéro de catalogue: CL594-67015	Numéro d'acquisition GenBank: BC038857	Méthode de purification: Purification par protéine A
Taille: 100ul, Concentration: 956 µg/ml by Nanodrop;	Identification du gène (NCBI): 4133	CloneNo.: 1C3E6
Hôte: Mouse	Nom complet: microtubule-associated protein 2	Excitation/Emission maxima wavelengths: 588 nm / 604 nm
Isotype: IgG2b	MW calculé 200 kDa	
Immunogen Catalog Number: AG11349		

Applications

Applications testées:
FC (Intra)
Spécificité de l'espèce:
Humain, rat, souris

Informations générales

MAP2 (microtubule-associated protein 2) is a cytoskeleton protein abundant in brain and has important role in neuronal morphogenesis. Multiple high molecular weight (MW) and low molecular weight (MW) MAP2 isoforms are expressed within axons, dendrites, and cell bodies. The expression of MAP2 is regulated in both a tissue- and developmentally specific manner. MAP2 antibodies have been widely used to mark the neuron or dendrite formation.

Stockage

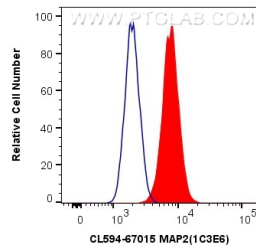
Stockage:
Stocker à -20 °C. Éviter toute exposition à la lumière. Stable pendant un an après l'expédition.
Tampon de stockage:
PBS avec glycérol à 50 %, Proclin300 à 0,05 % et BSA à 0,5 %, pH 7,3.
L'aliquotage n'est pas nécessaire pour le stockage à -20C

***** Les 20ul contiennent 0,1% de BSA.**

For technical support and original validation data for this product please contact:
T: 1 (888) 4PTGLAB (1-888-478-4522) (toll free in USA), or 1(312) 455-8498 (outside USA) E: proteintech@ptglab.com W: ptglab.com

This product is exclusively available under Proteintech Group brand and is not available to purchase from any other manufacturer.

Données de validation sélectionnées



1X10⁶ Neuro-2a cells were intracellularly stained with 0.2 ug CoraLite®594 Anti-Human MAP2 (CL594-67015, Clone:1C3E6) (red), or 0.2 ug Control Antibody. Cells were fixed with 4% PFA and permeabilized with Flow Cytometry Perm Buffer (PF00011-C).