

À des fins de recherche uniquement

# Anticorps Monoclonal anti-PRC1

Numéro de catalogue: CL594-67027



## Informations de base

Numéro de catalogue: CL594-67027	Numéro d'acquisition GenBank: BC003138	Méthode de purification: Purification par protéine G
Taille: 100ul , Concentration: 1000 µg/ml by Nanodrop;	Identification du gène (NCBI): 9055	CloneNo.: 1E1D5
Hôte: Mouse	Nom complet: protein regulator of cytokinesis 1	Dilutions recommandées: IF 1:50-1:500
Isotype: IgG1	MW calculé 72 kDa	Excitation/Emission maxima wavelengths: 588 nm / 604 nm
Immunogen Catalog Number: AG5907	MW observés: 66-72 kDa	

## Applications

Applications testées: IF	Contrôles positifs: IF : cellules HeLa,
Spécificité de l'espèce: Humain, rat, souris	

## Informations générales

PRC1 (protein regulator of cytokinesis 1) is a microtubule-bundling protein that is involved in cytokinesis. Depletion of PRC1 leads to failed cytokinesis. PRC1 is located in the nucleus during interphase, and becomes associated with mitotic spindles in a highly dynamic manner during mitosis, and localizes to the cell mid-body during cytokinesis. PRC1 is a substrate of CDK1 and it was assumed that CDK1 phosphorylation blocks its activity during metaphase. Three isoforms of PRC1 exist due to the alternative splicing, with predictive molecular weight of 71.6 kDa, 70.2 kDa and 66.2 kDa, respectively. The dual bands between 66-72 kDa detected by this antibody may represent different forms of PRC1.

## Stockage

**Stockage:**  
Stocker à -20 °C. Éviter toute exposition à la lumière.  
**Tampon de stockage:**  
PBS avec glycérol à 50 %, Proclin300 à 0,05 % et BSA à 0,5 %, pH 7,3.  
L'aliquotage n'est pas nécessaire pour le stockage à -20C

**\*\*\* Les 20ul contiennent 0,1% de BSA.**

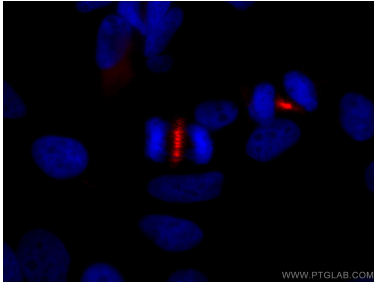
For technical support and original validation data for this product please contact:

T: 1 (888) 4PTGLAB (1-888-478-4522) (toll free  
in USA), or 1(312) 455-8498 (outside USA)

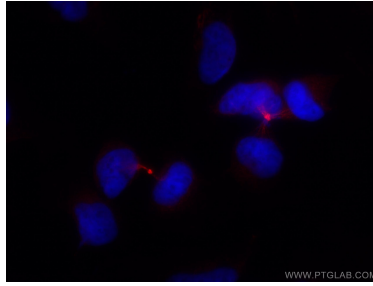
E: [proteintech@ptglab.com](mailto:proteintech@ptglab.com)  
W: [ptglab.com](http://ptglab.com)

**This product is exclusively available under Proteintech Group brand and is not available to purchase from any other manufacturer.**

## Données de validation sélectionnées



Immunofluorescent analysis of (4% PFA) fixed HeLa cells using CoraLite®594 PRC1 antibody (CL594-67027, Clone: 1E1D5 ) at dilution of 1:100.



Immunofluorescent analysis of (4% PFA) fixed HeLa cells using CoraLite®594 PRC1 antibody (CL594-67027, Clone: 1E1D5 ) at dilution of 1:100.