

À des fins de recherche uniquement

Anticorps Monoclonal anti-CES1

Numéro de catalogue: CL594-67079



Informations de base

Numéro de catalogue: CL594-67079	Numéro d'acquisition GenBank: BC012418	Méthode de purification: Purification par protéine G
Taille: 100ul , Concentration: 890 µg/ml by Nanodrop;	Identification du gène (NCBI): 1066	CloneNo.: 1C11C1
Hôte: Mouse	Nom complet: carboxylesterase 1 (monocyte/macrophage serine esterase 1)	Dilutions recommandées: IF 1:50-1:500
Isotype: IgG1	MW calculé 566 aa, 62 kDa	Excitation/Emission maxima wavelengths: 588 nm / 604 nm
Immunogen Catalog Number: AG10647	MW observés: 60-63 kDa	

Applications

Applications testées: IF	Contrôles positifs: IF : cellules HepG2,
Spécificité de l'espèce: Humain	

Informations générales

CES1(liver carboxylesterase 1) is also named as CES2, SES1 and belongs to the type-B carboxylesterase/lipase family. The deduced 567-amino acid protein contains a putative 18-amino acid signal peptide and a characteristic C-terminal endoplasmic reticulum retention signal (HXEL). It is the major hydrolytic enzyme responsible for the metabolism of numerous therapeutic agents as well as endogenous substrates. Westernblot analysis demonstrated that CES1 is expressed in human liver microsomes (HLM) but not in human intestinal microsomes (HIM) (PMID:19185566).

Stockage

Stockage:
Stocker à -20 °C. Éviter toute exposition à la lumière.
Tampon de stockage:
PBS avec glycérol à 50 %, Proclin300 à 0,05 % et BSA à 0,5 %, pH 7,3.
L'aliquotage n'est pas nécessaire pour le stockage à -20C

***** Les 20ul contiennent 0,1% de BSA.**

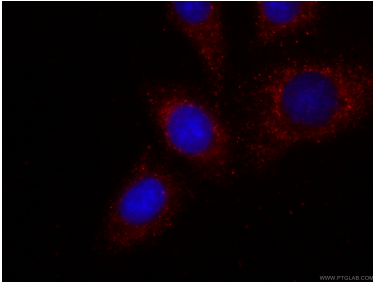
For technical support and original validation data for this product please contact:

T: 1 (888) 4PTGLAB (1-888-478-4522) (toll free
in USA), or 1(312) 455-8498 (outside USA)

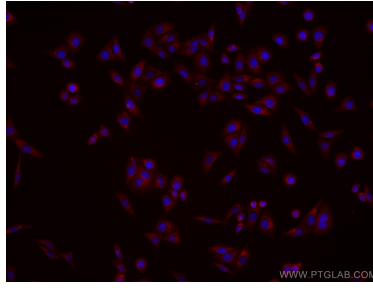
E: proteintech@ptglab.com
W: ptglab.com

This product is exclusively available under Proteintech Group brand and is not available to purchase from any other manufacturer.

Données de validation sélectionnées



Immunofluorescent analysis of (-20°C Ethanol) fixed HepG2 cells using CL594-67079 (CES1 antibody) at dilution of 1:100.



Immunofluorescent analysis of (-20°C Ethanol) fixed HepG2 cells using CoraLite®594-conjugated CES1 antibody (CL594-67079, Clone: 1C11C1) at dilution of 1:100.