

À des fins de recherche uniquement

Anticorps Monoclonal anti-L1CAM

Numéro de catalogue: CL594-67115



Informations de base

| | | |
|---|---|---|
| Numéro de catalogue: CL594-67115 | Numéro d'acquisition GenBank: BC126229 | Méthode de purification: Purification par protéine G |
| Taille: 100ul, Concentration: 1000 µg/ml by Nanodrop; | Identification du gène (NCBI): 3897 | CloneNo.: 3H7B9 |
| Hôte: Mouse | Nom complet: L1 cell adhesion molecule | Dilutions recommandées: IF 1:50-1:500 |
| Isotype: IgG1 | MW calculé: 1257 aa, 140 kDa | Excitation/Emission maxima wavelengths: 588 nm / 604 nm |
| Immunogen Catalog Number: AG17706 | MW observés: 220 kDa | |

Applications

| | |
|---|---|
| Applications testées: IF | Contrôles positifs: IF : tissu cérébral de souris, |
| Spécificité de l'espèce: Humain, porc, rat, souris | |

Informations générales

L1CAM, also known as NCAM-L1 or CD171, is a cell adhesion molecule of the immunoglobulin superfamily. It is a 200-220 kDa transmembrane glycoprotein composed of six Ig-like domains and five fibronectin type III repeats followed by a transmembrane region and a highly conserved cytoplasmic tail (PMID: 3412448; 22796939). L1CAM is primarily expressed in the nervous system and is involved in neuron-neuron adhesion, neurite fasciculation, outgrowth of neurites, cerebellar granule cell migration, neurite outgrowth on Schwann cells and interactions among epithelial cells of intestinal crypts (PMID: 3412448; 10767310). L1CAM is overexpressed in many human cancers and is often associated with bad prognosis (PMID: 27267927; 26111503).

Stockage

Stockage:
Stocker à -20 °C. Éviter toute exposition à la lumière.
Tampon de stockage:
PBS avec glycérol à 50 %, Proclin300 à 0,05 % et BSA à 0,5 %, pH 7,3.
L'aliquotage n'est pas nécessaire pour le stockage à -20C

***** Les 20ul contiennent 0,1% de BSA.**

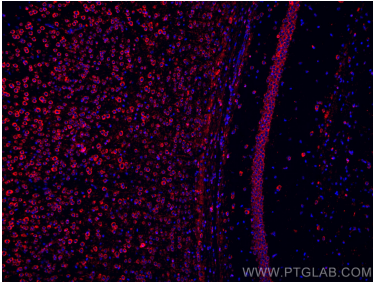
For technical support and original validation data for this product please contact:

T: 1 (888) 4PTGLAB (1-888-478-4522) (toll free
in USA), or 1(312) 455-8498 (outside USA)

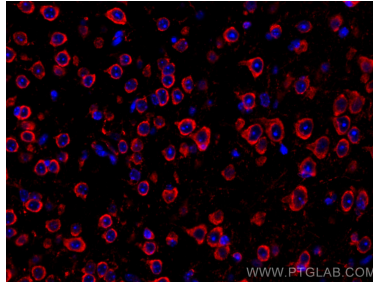
E: proteintech@ptglab.com
W: ptglab.com

This product is exclusively available under Proteintech Group brand and is not available to purchase from any other manufacturer.

Données de validation sélectionnées



Immunofluorescent analysis of (4% PFA) fixed mouse brain tissue using CoraLite® 594 L1CAM antibody (CL594-67115, Clone: 3H7B9) at dilution of 1:200.



Immunofluorescent analysis of (4% PFA) fixed mouse brain tissue using CoraLite® 594 L1CAM antibody (CL594-67115, Clone: 3H7B9) at dilution of 1:200.