

À des fins de recherche uniquement

# Anticorps Monoclonal anti-ACLY

Numéro de catalogue: CL594-67166



## Informations de base

<b>Numéro de catalogue:</b> CL594-67166	<b>Numéro d'acquisition GenBank:</b> BC006195	<b>Méthode de purification:</b> Précipitation de l'acide caprylique/du sulfate d'ammonium
<b>Taille:</b> 100ul , Concentration: 1000 µg/ml by 47 Nanodrop;	<b>Identification du gène (NCBI):</b> 47	<b>CloneNo.:</b> 1E10D5
<b>Hôte:</b> Mouse	<b>Nom complet:</b> ATP citrate lyase	<b>Dilutions recommandées:</b> IF 1:50-1:500
<b>Isotype:</b> IgM	<b>MW calculé</b> 121 kDa	<b>Excitation/Emission maxima wavelengths:</b> 588 nm / 604 nm
<b>Immunogen Catalog Number:</b> AG7709	<b>MW observés:</b> 120 kDa	

## Applications

<b>Applications testées:</b> IF	<b>Contrôles positifs:</b> IF : cellules A549,
<b>Spécificité de l'espèce:</b> Humain, rat, souris	

## Informations générales

ACLY(ATP-citrate synthase) is also named as ACL. It is the primary enzyme responsible for the synthesis of cytosolic acetyl-CoA. ACLY serves as not only a target in oxygenated cells for suppression of lipid synthesis and histone acetylation, but also as a susceptible target in hypoxic cells to restore inhibition of glycolysis. In nonsmall cell lung carcinoma and hepatocellular carcinoma, ACLY is overexpressed compared with normal parenchyma suggesting that ACLY may represent a common target among highly malignant tumors(PMID:19795461). This protein has 2 isoforms produced by alternative splicing.

## Stockage

**Stockage:**  
Stocker à -20 °C. Éviter toute exposition à la lumière. Stable pendant un an après l'expédition.  
**Tampon de stockage:**  
PBS avec glycérol à 50 %, Proclin300 à 0,05 % et BSA à 0,5 %, pH 7,3.  
L'aliquotage n'est pas nécessaire pour le stockage à -20C

**\*\*\* Les 20ul contiennent 0,1% de BSA.**

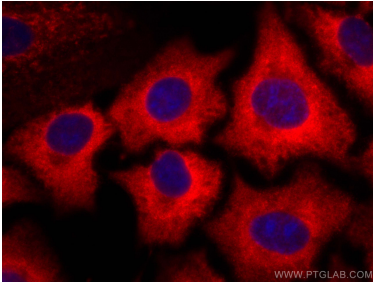
For technical support and original validation data for this product please contact:

T: 1 (888) 4PTGLAB (1-888-478-4522) (toll free in USA), or 1(312) 455-8498 (outside USA)

E: proteintech@ptglab.com  
W: ptglab.com

**This product is exclusively available under Proteintech Group brand and is not available to purchase from any other manufacturer.**

## Données de validation sélectionnées



Immunofluorescent analysis of (-20°C Methanol) fixed A549 cells using CoraLite@594 ACLY antibody (CL594-67166, Clone: 1E10D5 ) at dilution of 1:200.