

À des fins de recherche uniquement

Anticorps Monoclonal anti-GPI

Numéro de catalogue: **CL594-67178** **Phare**



Informations de base

Numéro de catalogue: CL594-67178	Numéro d'acquisition GenBank: BC004982	Méthode de purification: Purification par protéine G
Taille: 100ul , Concentration: 1000 µg/ml by Nanodrop;	Identification du gène (NCBI): 2821	CloneNo.: 2F11E4
Hôte: Mouse	Nom complet: glucose phosphate isomérase	Dilutions recommandées: IF 1:50-1:500
Isotype: IgG1	MW calculé: 63 kDa	Excitation/Emission maxima wavelengths: 594 nm / 615 nm
Immunogen Catalog Number: AG7419	MW observés: 55-64 kDa	

Applications

Applications testées: IF	Contrôles positifs: IF : cellules PC-3,
Spécificité de l'espèce: Humain	

Informations générales

GPI (Glucose-6-phosphate isomérase), which is also named as autocrine motility factor (AMF), phosphoglucose isomérase (PGI), Neuroleukin (NLK), phosphohexose isomérase (PHI) or sperm antigen 36 (SA-36), is a housekeeping cytosolic enzyme that plays a key role in both glycolysis and gluconeogenesis pathways. It is also a multifunctional protein that displays cytokine properties, eliciting mitogenic, motogenic, and differentiation activities, and has been implicated in tumor progression and metastasis (PMID:12783864, 19603112). This protein can exist as a homodimer in the catalytically active form and a monomer in the secreted form (PMID:11371164). It has 2 isoforms produced by alternative splicing with the calculated molecular mass of 63-64kDa, and an apparent molecular mass of 55 and 64 kDa under non-reducing and reducing conditions, respectively (PMID: 19603112, 11004567).

Stockage

Stockage:
Stocker à -20 °C. Éviter toute exposition à la lumière. Stable pendant un an après l'expédition.
Tampon de stockage:
PBS avec glycérol à 50 %, Proclin300 à 0,05 % et BSA à 0,5 %, pH 7,3.
L'aliquotage n'est pas nécessaire pour le stockage à -20C

***** Les 20ul contiennent 0,1% de BSA.**

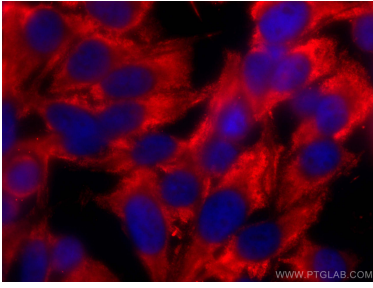
For technical support and original validation data for this product please contact:

T: 1 (888) 4PTGLAB (1-888-478-4522) (toll free in USA), or 1(312) 455-8498 (outside USA)

E: proteintech@ptglab.com
W: ptglab.com

This product is exclusively available under Proteintech Group brand and is not available to purchase from any other manufacturer.

Données de validation sélectionnées



Immunofluorescent analysis of (-20°C Methanol) fixed PC-3 cells using CoraLite® Plus 594 GPI antibody (CL594-67178, Clone: 2F11E4) at dilution of 1:200.