

À des fins de recherche uniquement

# Anticorps Monoclonal anti-ENO1

Numéro de catalogue: CL594-67187



## Informations de base

Numéro de catalogue: CL594-67187	Numéro d'acquisition GenBank: BC015641	Méthode de purification: Chromatographie d'affinité thiophilique
Taille: 100ul , Concentration: 1000 µg/ml by Nanodrop;	Identification du gène (NCBI): 2023	CloneNo.: 1D6E8
Hôte: Mouse	Nom complet: enolase 1, (alpha)	Dilutions recommandées: IF 1:50-1:500
Isotype: IgM	MW calculé 47 kDa	Excitation/Emission maxima wavelengths: 588 nm / 604 nm
Immunogen Catalog Number: AG17518	MW observés: 47 kDa	

## Applications

Applications testées: IF	Contrôles positifs: IF : cellules HeLa,
Spécificité de l'espèce: Humain, porc, rat, souris	

## Informations générales

ENO1, also named as NNE, ENO1L1, MBPB1, MPB1 and MBP1, belongs to the enolase family. ENO1 is a metabolic enzyme involved in the synthesis of pyruvate. It also acts as a plasminogen receptor and mediates the activation of plasmin and extracellular matrix degradation. In tumor cells, ENO1 is up-regulated and supports the Warburg effect; it is expressed at the cell surface, where it promotes cancer invasion, and is subjected to a specific array of post-translational modifications, namely acetylation, methylation and phosphorylation. ENO1 overexpression and post-translational modifications could be of diagnostic and prognostic value in many cancer types. (PMID: 27814656)

## Stockage

**Stockage:**  
Stocker à -20 °C. Éviter toute exposition à la lumière. Stable pendant un an après l'expédition.  
**Tampon de stockage:**  
PBS avec glycérol à 50 %, Proclin300 à 0,05 % et BSA à 0,5 %, pH 7,3.  
L'aliquotage n'est pas nécessaire pour le stockage à -20C

**\*\*\* Les 20ul contiennent 0,1% de BSA.**

For technical support and original validation data for this product please contact:

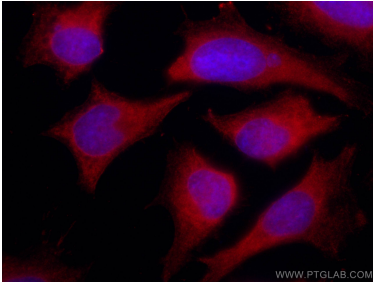
T: 1 (888) 4PTGLAB (1-888-478-4522) (toll free  
in USA), or 1(312) 455-8498 (outside USA)

E: [proteintech@ptglab.com](mailto:proteintech@ptglab.com)  
W: [ptglab.com](http://ptglab.com)

**This product is exclusively available under Proteintech Group brand and is not available to purchase from any other manufacturer.**

---

## Données de validation sélectionnées



Immunofluorescent analysis of (-20°C Ethanol) fixed HeLa cells using CoraLite®594-conjugated ENO1 antibody (CL594-67187, Clone: 1D6E8 ) at dilution of 1:100.