

À des fins de recherche uniquement

Anticorps Monoclonal anti-KIF20A

Numéro de catalogue: CL594-67190

1 Publications



Informations de base

Numéro de catalogue: CL594-67190	Numéro d'acquisition GenBank: BC012999	Méthode de purification: Purification par protéine G
Taille: 100ul , Concentration: 1000 µg/ml by Nanodrop;	Identification du gène (NCBI): 10112	CloneNo.: 2A8E3
Hôte: Mouse	Nom complet: kinesin family member 20A	Dilutions recommandées: IF 1:50-1:500
Isotype: IgG1	MW calculé 890 aa, 100 kDa	Excitation/Emission maxima wavelengths: 588 nm / 604 nm
Immunogen Catalog Number: AG8916	MW observés: 100 kDa	

Applications

Applications testées: IF	Contrôles positifs: IF : cellules HeLa,
Demandes citées: IF	
Spécificité de l'espèce: Humain, rat, souris	

Informations générales

KIF20A, also known as RAB6KIFL or MKlp2, is a kinesin originally identified as a binding partner for the rab6 GTPase involved in protein transport at the Golgi apparatus. KIF20A belongs to a large family of motor proteins that accumulate in mitotic cells and is required for normal cell division. KIF20A is thought to be involved in carcinogenesis. In normal tissues KIF20A is almost undetectable while it is overexpressed in various cancers. KIF20A has been identified as a novel promising candidate for anticancer immunotherapy.

Publications notables

Autrice	Pubmed ID	Journal	Application
Tianyu Wu	36395215	Science	IF

Stockage

Stockage:
Stocker à -20 °C. Éviter toute exposition à la lumière.
Tampon de stockage:
PBS avec glycérol à 50 %, Proclin300 à 0,05 % et BSA à 0,5 %, pH 7,3.
L'aliquotage n'est pas nécessaire pour le stockage à -20C

*** Les 20ul contiennent 0,1% de BSA.

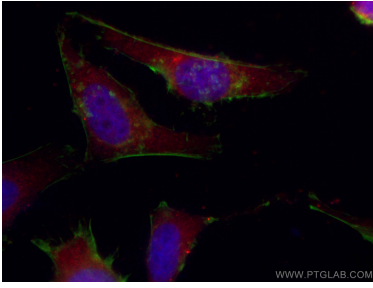
For technical support and original validation data for this product please contact:

T: 1 (888) 4PTGLAB (1-888-478-4522) (toll free
in USA), or 1(312) 455-8498 (outside USA)

E: proteintech@ptglab.com
W: ptglab.com

This product is exclusively available under Proteintech Group brand and is not available to purchase from any other manufacturer.

Données de validation sélectionnées



Immunofluorescent analysis of (4% PFA) fixed HeLa cells using CoraLite@594-conjugated KIF20A antibody (CL594-67190, Clone: 2A8E3) at dilution of 1:200, CL488-Phalloidin (green).