

À des fins de recherche uniquement

Anticorps Monoclonal anti-ZG16

Numéro de catalogue: CL594-67389



Informations de base

Numéro de catalogue: CL594-67389	Numéro d'acquisition GenBank: BC029149	Méthode de purification: Purification par protéine G
Taille: 100ul, Concentration: 1000 µg/ml by Nanodrop;	Identification du gène (NCBI): 653808	CloneNo.: 1A7B9
Hôte: Mouse	Nom complet: zymogen granule protein 16 homolog (rat)	Dilutions recommandées: IF 1:50-1:500
Isotype: IgG1	MW calculé 167 aa, 18 kDa	Excitation/Emission maxima wavelengths: 594 nm / 615 nm
Immunogen Catalog Number: AG11332	MW observés: 16 kDa	

Applications

Applications testées: IF	Contrôles positifs: IF : tissu d'intestin grêle de souris,
Spécificité de l'espèce: Humain, porc, rat, souris	

Informations générales

Zymogen granule protein 16 (ZG16) has a Jacalin-like lectin domain, which is mainly expressed by mucus-secreting cells, including goblet cells in the intestine. It's reported that ZG16 expression was significantly decreased in colorectal cancer compared to normal tissue. ZG16 gene expression and copy number variations (CNV) were associated with multiple molecular and clinicopathological features of CRC including MSI, MLH1 silencing and so on. It's found that ZG16 is negatively correlated with lymphatic invasive and distant metastasis. Besides, overexpression of ZG16 blocks PD-L1 expression in colorectal cancer, and promotes NK cells survival and proliferation. Very importantly, ZG16 suppresses colorectal tumor growth via the immune system. (PMID: 33360840, 21893569)

Stockage

Stockage:
Stocker à -20 °C. Éviter toute exposition à la lumière. Stable pendant un an après l'expédition.
Tampon de stockage:
PBS avec glycérol à 50 %, Proclin300 à 0,05 % et BSA à 0,5 %, pH 7,3.
L'aliquotage n'est pas nécessaire pour le stockage à -20C

*** Les 20ul contiennent 0,1% de BSA.

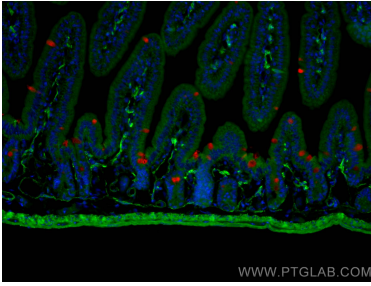
For technical support and original validation data for this product please contact:

T: 1 (888) 4PTGLAB (1-888-478-4522) (toll free
in USA), or 1(312) 455-8498 (outside USA)

E: proteintech@ptglab.com
W: ptglab.com

This product is exclusively available under Proteintech Group brand and is not available to purchase from any other manufacturer.

Données de validation sélectionnées



Immunofluorescent analysis of (4% PFA) fixed mouse small intestine tissue using CoraLite® Plus 594 ZG16 antibody (CL594-67389, Clone: 1A7B9) at dilution of 1:200, CoraLite® Plus 488 smooth muscle actin antibody (CL488-14395, green).