

À des fins de recherche uniquement

# Anticorps Monoclonal anti-Profilin 1

Numéro de catalogue: CL594-67390



## Informations de base

Numéro de catalogue: CL594-67390	Numéro d'acquisition GenBank: BC006768	Méthode de purification: Purification par protéine A
Taille: 100ul, Concentration: 991 µg/ml by Nanodrop;	Identification du gène (NCBI): 5216	CloneNo.: 3A12E8
Hôte: Mouse	Nom complet: profilin 1	Dilutions recommandées: IF 1:50-1:500
Isotype: IgG2b	MW calculé 140 aa, 15 kDa	Excitation/Emission maxima wavelengths: 588 nm / 604 nm
Immunogen Catalog Number: AG29206	MW observés: 13 kDa	

## Applications

Applications testées: IF	Contrôles positifs: IF : cellules HeLa,
Spécificité de l'espèce: Humain, rat, souris	

## Informations générales

Profilin-1 (PFN1) plays an important role in the control of actin dynamics, and could represent an important therapeutic target in several diseases. PFN1 is identified as a huntingtin aggregation inhibitor, and may serve as a tumor-suppressor. PFN1 is crucial for the conversion of monomeric (G)-actin to filamentous (F)-actin. Amyotrophic lateral sclerosis (ALS) is a late-onset neurodegenerative disorder resulting from motor neuron death. Cells expressing PFN1 mutants contain ubiquitinated, insoluble aggregates that in many cases contain the ALS-associated protein TDP-43. Recently, PFN1 is a potential biomarker for bladder cancer aggressiveness and may be of great clinical importance.

## Stockage

**Stockage:**  
Stocker à -20 °C. Éviter toute exposition à la lumière.  
**Tampon de stockage:**  
PBS avec glycérol à 50 %, Proclin300 à 0,05 % et BSA à 0,5 %, pH 7,3.  
L'aliquotage n'est pas nécessaire pour le stockage à -20C

**\*\*\* Les 20ul contiennent 0,1% de BSA.**

For technical support and original validation data for this product please contact:

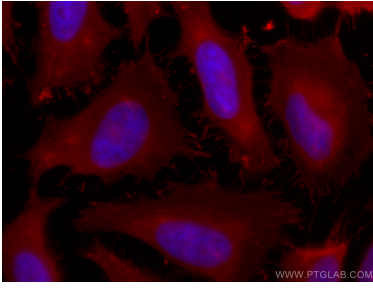
T: 1 (888) 4PTGLAB (1-888-478-4522) (toll free  
in USA), or 1(312) 455-8498 (outside USA)

E: [proteintech@ptglab.com](mailto:proteintech@ptglab.com)  
W: [ptglab.com](http://ptglab.com)

**This product is exclusively available under Proteintech Group brand and is not available to purchase from any other manufacturer.**

---

## Données de validation sélectionnées



Immunofluorescent analysis of (-20°C Ethanol) fixed HeLa cells using CoraLite@594 Profilin 1 antibody (CL594-67390, Clone: 3A12E8 ) at dilution of 1:100.