

À des fins de recherche uniquement

Anticorps Monoclonal anti-RALYL

Numéro de catalogue: **CL594-67534**



Informations de base

Numéro de catalogue: CL594-67534	Numéro d'acquisition GenBank: BC031090	Méthode de purification: Purification par protéine G
Taille: 100ul , Concentration: 1000 µg/ml by Nanodrop;	Identification du gène (NCBI): 138046	CloneNo.: 1F3F4
Hôte: Mouse	Nom complet: RALY RNA binding protein-like	Dilutions recommandées: IF 1:50-1:500
Isotype: IgG1	MW calculé 291 aa, 32 kDa	Excitation/Emission maxima wavelengths: 588 nm / 604 nm
Immunogen Catalog Number: AG11676	MW observés: 35-40 kDa	

Applications

Applications testées: FC (Intra), IF	Contrôles positifs: IF : cellules HepG2,
Spécificité de l'espèce: Humain, porc, rat, souris	

Informations générales

RALY RNA binding protein-like (RALYL) belongs to the RALY subfamily. RALYL locates in 8q21.2, the function of which is RNA-binding and nucleotide binding. The RALYL high expression in the normal adrenal, kidney and brain (Shyamsundar et al., 2005). Furthermore, RALYL expression down-regulated correlates with mental disorder (Lee et al., 2007), Parkinson's disease (Moran et al., 2006), brain cancer (Maris et al., 2008), adrenal cancer (Giordano et al., 2009) and kidney cancer (Higgins et al., 2003). The expression of RALYL was significantly low in Clear Cell Renal Cell Carcinoma and correlated with a poor prognosis in a large number of clinical samples. Our findings showed that RALYL may be a potential therapeutic target as well as a poor prognostic

Stockage

Stockage:
Stocker à -20 °C. Éviter toute exposition à la lumière. Stable pendant un an après l'expédition.
Tampon de stockage:
PBS avec glycérol à 50 %, Proclin300 à 0,05 % et BSA à 0,5 %, pH 7,3.
L'aliquotage n'est pas nécessaire pour le stockage à -20C

***** Les 20ul contiennent 0,1% de BSA.**

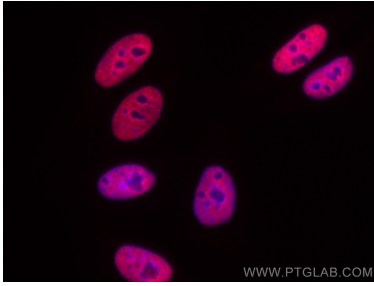
For technical support and original validation data for this product please contact:

T: 1 (888) 4PTGLAB (1-888-478-4522) (toll free
in USA), or 1(312) 455-8498 (outside USA)

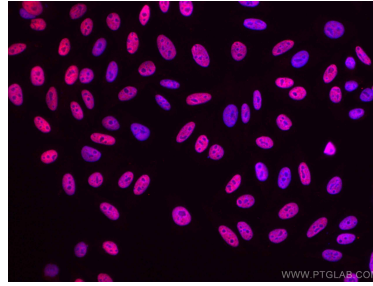
E: proteintech@ptglab.com
W: ptglab.com

This product is exclusively available under Proteintech Group brand and is not available to purchase from any other manufacturer.

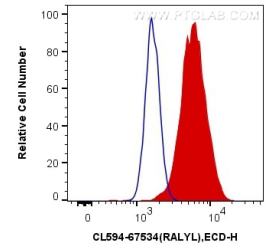
Données de validation sélectionnées



Immunofluorescent analysis of (4% PFA) fixed HepG2 cells using CoraLite®594 RALYL antibody (CL594-67534, Clone: 1F3F4) at dilution of 1:200.



Immunofluorescent analysis of (4% PFA) fixed HepG2 cells using CoraLite®594 RALYL antibody (CL594-67534, Clone: 1F3F4) at dilution of 1:100.



1X10⁶ HepG2 cells were intracellularly stained with 0.4 ug CoraLite®594 Anti-Human RALYL (CL594-67534, Clone:1F3F4) (red), or 0.4 ug Control Antibody. Cells were fixed and permeabilized with Transcription Factor Staining Buffer Kit (PF00011).