

À des fins de recherche uniquement

Anticorps Monoclonal anti-GRIA1

Numéro de catalogue: CL594-67642



Informations de base

Numéro de catalogue: CL594-67642	Numéro d'acquisition GenBank: BC111734	Méthode de purification: Purification par protéine A
Taille: 100ul , Concentration: 1000 µg/ml by Nanodrop;	Identification du gène (NCBI): 2890	CloneNo.: 1F4A1
Hôte: Mouse	Nom complet: glutamate receptor, ionotropic, AMPA 1	Dilutions recommandées: IF 1:50-1:500
Isotype: IgG2b	MW calculé 906 aa, 102 kDa	Excitation/Emission maxima wavelengths: 588 nm / 604 nm
Immunogen Catalog Number: AG28932	MW observés: 100 kDa	

Applications

Applications testées:

FC (Intra), IF

Spécificité de l'espèce:

Humain, Lapin, porc, rat, souris

Contrôles positifs:

IF : tissu cérébral de souris,

Informations générales

Glutamate receptors are the predominant excitatory neurotransmitter receptors in the mammalian brain and are activated in a variety of normal neurophysiologic processes. These receptors are heteromeric protein complexes with multiple subunits, each possessing transmembrane regions, and all arranged to form a ligand-gated ion channel. The classification of glutamate receptors is based on their activation by different pharmacologic agonists. This gene belongs to a family of alpha-amino-3-hydroxy-5-methyl-4-isoxazole propionate (AMPA) receptors.

Stockage

Stockage:

Stocker à -20 °C. Éviter toute exposition à la lumière. Stable pendant un an après l'expédition.

Tampon de stockage:

PBS avec glycérol à 50 %, Proclin300 à 0,05 % et BSA à 0,5 %, pH 7,3.

L'aliquotage n'est pas nécessaire pour le stockage à -20C

***** Les 20ul contiennent 0,1% de BSA.**

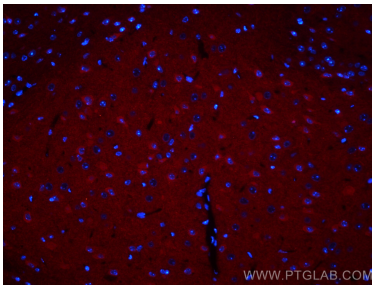
For technical support and original validation data for this product please contact:

T: 1 (888) 4PTGLAB (1-888-478-4522) (toll free
in USA), or 1(312) 455-8498 (outside USA)

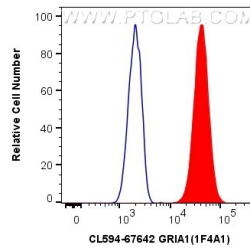
E: proteintech@ptglab.com
W: ptglab.com

This product is exclusively available under Proteintech Group brand and is not available to purchase from any other manufacturer.

Données de validation sélectionnées



Immunofluorescent analysis of (4% PFA) fixed mouse brain tissue using CoraLite®594 GRIA1 antibody (CL594-67642, Clone: 1F4A1) at dilution of 1:200.



1X10⁶ HeLa cells were intracellularly stained with 0.4 ug CoraLite®594 Anti-Human GRIA1 (CL594-67642, Clone:1F4A1) (red), or 0.4 ug Control Antibody. Cells were fixed with 4% PFA and permeabilized with Flow Cytometry Perm Buffer (PF00011-C).