

À des fins de recherche uniquement

# Anticorps Monoclonal anti-smooth muscle actin specific



Numéro de catalogue: CL594-67735

## Informations de base

Numéro de catalogue: CL594-67735	Numéro d'acquisition GenBank: NM_001613	Méthode de purification: Purification par protéine G
Taille: 100ul, Concentration: 1000 µg/ml by Nanodrop;	Identification du gène (NCBI): 59	CloneNo.: 1E9A11
Hôte: Mouse	Nom complet: actin, alpha 2, smooth muscle, aorta	Dilutions recommandées: IF 1:50-1:500
Isotype: IgG1	MW calculé: 42 kDa	Excitation/Emission maxima wavelengths: 588 nm / 604 nm
	MW observés: 42 kDa	

## Applications

Applications testées:  
FC (Intra), IF  
Spécificité de l'espèce:  
Humain, porc, rat, souris

Contrôles positifs:  
IF : tissu cardiaque de souris,

## Informations générales

ACTA2 (also known as  $\alpha$ -smooth muscle actin or  $\alpha$ -SMA) belongs to the actin family. Actins are highly conserved proteins that are involved in various types of cell motility and are ubiquitously expressed in all eukaryotic cells. ACTA2 is primarily expressed in vascular smooth muscle and anti-ACTA2 is commonly used to marker smooth muscle cells.

## Stockage

Stockage:  
Stocker à -20 °C. Éviter toute exposition à la lumière.  
Tampon de stockage:  
PBS avec glycérol à 50 %, Proclin300 à 0,05 % et BSA à 0,5 %, pH 7,3.  
L'aliquotage n'est pas nécessaire pour le stockage à -20C

\*\*\* Les 20ul contiennent 0,1% de BSA.

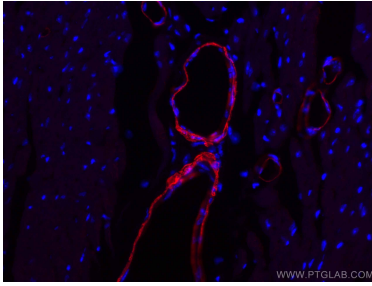
For technical support and original validation data for this product please contact:

T: 1 (888) 4PTGLAB (1-888-478-4522) (toll free  
in USA), or 1(312) 455-8498 (outside USA)

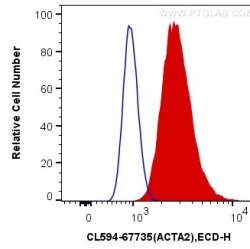
E: [proteintech@ptglab.com](mailto:proteintech@ptglab.com)  
W: [ptglab.com](http://ptglab.com)

This product is exclusively available under Proteintech Group brand and is not available to purchase from any other manufacturer.

## Données de validation sélectionnées



Immunofluorescent analysis of (4% PFA) fixed mouse heart tissue using CoraLite®594 smooth muscle actin specific antibody (CL594-67735, Clone: 1E9A11 ) at dilution of 1:100.



1X10<sup>6</sup> C2C12 cells were intracellularly stained with 0.4 ug CoraLite®594 Anti-Human smooth muscle actin specific (CL594-67735, Clone:1E9A11) (red), or 0.4 ug Mouse IgG1 Isotype Control (CL594-66360, Clone: T1F8D3F10) (blue). Cells were fixed with 4% PFA and permeabilized with Flow Cytometry Perm Buffer (PF00011-C).