

À des fins de recherche uniquement

# Anticorps Monoclonal anti-PSME1

Numéro de catalogue: CL594-67928



## Informations de base

Numéro de catalogue: CL594-67928	Numéro d'acquisition GenBank: BC007503	Méthode de purification: Purification par protéine G
Taille: 100ul , Concentration: 1000 µg/ml by Nanodrop;	Identification du gène (NCBI): 5720	CloneNo.: 1F7E2
Hôte: Mouse	Nom complet: proteasome (prosome, macropain) activator subunit 1 (PA28 alpha)	Dilutions recommandées: IF 1:50-1:500
Isotype: IgG1	MW calculé 29 kDa	Excitation/Emission maxima wavelengths: 588 nm / 604 nm
Immunogen Catalog Number: AG30549	MW observés: 29 kDa	

## Applications

Applications testées: FC (Intra), IF	Contrôles positifs: IF : cellules MCF-7,
Spécificité de l'espèce: Humain, souris	

## Informations générales

The principal function of the proteasome is targeted degradation of intracellular proteins. Activity of the 20S proteasome is controlled by regulatory complexes that bind to the ends of the cylindrical proteasome. 11S regulator (REG or PA28), is a complex of 28 kDa subunits that is thought to activate proteasomes toward the production of antigenic peptides. Human PSME1 and PSME2 genes encode the two proteasome activators PA28 alpha and beta, respectively, which have been implicated in antigen processing for loading class I MHC molecules. The PA28 activator complex enhances the generation of class I binding peptides by altering the cleavage pattern of the proteasome.

## Stockage

**Stockage:**  
Stocker à -20 °C. Éviter toute exposition à la lumière. Stable pendant un an après l'expédition.  
**Tampon de stockage:**  
PBS avec glycérol à 50 %, Proclin300 à 0,05 % et BSA à 0,5 %, pH 7,3.  
L'aliquotage n'est pas nécessaire pour le stockage à -20C

**\*\*\* Les 20ul contiennent 0,1% de BSA.**

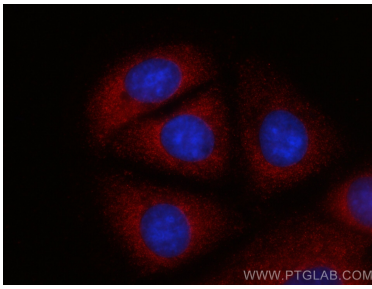
For technical support and original validation data for this product please contact:

T: 1 (888) 4PTGLAB (1-888-478-4522) (toll free  
in USA), or 1(312) 455-8498 (outside USA)

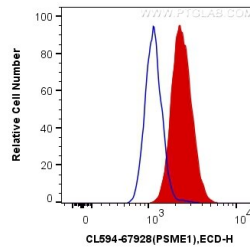
E: [proteintech@ptglab.com](mailto:proteintech@ptglab.com)  
W: [ptglab.com](http://ptglab.com)

**This product is exclusively available under Proteintech Group brand and is not available to purchase from any other manufacturer.**

## Données de validation sélectionnées



Immunofluorescent analysis of (-20°C Methanol) fixed MCF-7 cells using CoraLite@594 PSME1 antibody (CL594-67928, Clone: 1F7E2) at dilution of 1:200.



1X10<sup>6</sup> MCF-7 cells were intracellularly stained with 0.4 ug CoraLite@594 Anti-Human PSME1 (CL594-67928, Clone:1F7E2) (red), or 0.4 ug Control Antibody. Cells were fixed with 4% PFA and permeabilized with Flow Cytometry Perm Buffer (PF00011-C).