

À des fins de recherche uniquement

Anticorps Monoclonal anti-RALY

Numéro de catalogue: CL594-68011



Informations de base

Numéro de catalogue: CL594-68011	Numéro d'acquisition GenBank: BC103753	Méthode de purification: Purification par protéine G
Taille: 100ul, Concentration: 1000 µg/ml by Nanodrop;	Identification du gène (NCBI): 22913	CloneNo.: 2B10C3
Hôte: Mouse	Nom complet: RNA binding protein, autoantigenic (hnRNP-associated with lethal yellow homolog (mouse))	Dilutions recommandées: IF 1:50-1:500
Isotype: IgG1	MW calculé 307 aa, 33 kDa	Excitation/Emission maxima wavelengths: 588 nm / 604 nm
Immunogen Catalog Number: AG12250	MW observés: 37 kDa	

Applications

Applications testées: FC (Intra), IF	Contrôles positifs: IF : cellules A431,
Spécificité de l'espèce: Humain	

Informations générales

RNA-binding protein RALY is a protein that in humans is encoded by the RALY gene. In infectious mononucleosis, anti-EBNA-1 antibodies are produced which cross-react with multiple normal human proteins. The cross-reactivity is due to anti-gly/ala antibodies that cross-react with host proteins containing configurations like those in the EBNA-1 repeat. One such antigen is RALY which is a member of the heterogeneous nuclear ribonucleoprotein gene family.

Stockage

Stockage:
Stocker à -20 °C. Éviter toute exposition à la lumière. Stable pendant un an après l'expédition.
Tampon de stockage:
PBS avec glycérol à 50 %, Proclin300 à 0,05 % et BSA à 0,5 %, pH 7,3.
L'aliquotage n'est pas nécessaire pour le stockage à -20C

***** Les 20ul contiennent 0,1% de BSA.**

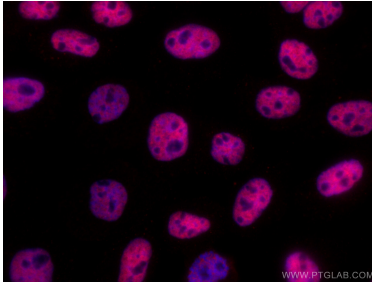
For technical support and original validation data for this product please contact:

T: 1 (888) 4PTGLAB (1-888-478-4522) (toll free
in USA), or 1(312) 455-8498 (outside USA)

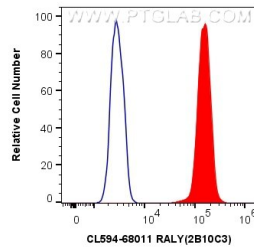
E: proteintech@ptglab.com
W: ptglab.com

This product is exclusively available under Proteintech Group brand and is not available to purchase from any other manufacturer.

Données de validation sélectionnées



Immunofluorescent analysis of (4% PFA) fixed A431 cells using CoraLite®594 RALY antibody (CL594-68011, Clone: 2B10C3) at dilution of 1:200.



1X10⁶ A431 cells were intracellularly stained with 0.4 ug CoraLite®594 Anti-Human RALY (CL594-68011, Clone:2B10C3) (red), or 0.4 ug CoraLite®594 Mouse IgG1 Isotype Control (MOPC-21) (CL594-65124, Clone: MOPC-21) (blue). Cells were fixed and permeabilized with Transcription Factor Staining Buffer Kit (PF00011).