

À des fins de recherche uniquement

# Anticorps Monoclonal anti-ALDH3A1

Numéro de catalogue: CL594-68036



## Informations de base

Numéro de catalogue: CL594-68036	Numéro d'acquisition GenBank: BC004370	Méthode de purification: Purification par protéine G
Taille: 100ul , Concentration: 1000 µg/ml by Nanodrop;	Identification du gène (NCBI): 218	CloneNo.: 1D4G7
Hôte: Mouse	Nom complet: aldehyde dehydrogenase 3 family, memberA1	Dilutions recommandées: IF 1:50-1:500
Isotype: IgG1	MW calculé 50 kDa	Excitation/Emission maxima wavelengths: 588 nm / 604 nm
Immunogen Catalog Number: AG8125	MW observés: 50 kDa	

## Applications

Applications testées: FC, IF (Intra)	Contrôles positifs: IF : cellules HEK-293,
Spécificité de l'espèce: Humain	

## Informations générales

ALDH3A1 (Aldehyde dehydrogenase, dimeric NADP-preferring), also named as ALDH3, is a member of the ALDH superfamily, which consists of NAD(P)<sup>+</sup>-dependent enzymes that catalyse the oxidation of a wide variety of endogenously produced and exogenous aldehydes to their corresponding acids. It is expressed at high concentrations in the mammalian cornea and it is believed that it protects this vital tissue and the rest of the eye against UVlight-induced damage.(PMID:12943535). It can exist as a dimer(PMID:16919242).

## Stockage

**Stockage:**  
Stocker à -20 °C. Éviter toute exposition à la lumière. Stable pendant un an après l'expédition.  
**Tampon de stockage:**  
PBS avec glycérol à 50 %, Proclin300 à 0,05 % et BSA à 0,5 %, pH 7,3.  
L'aliquotage n'est pas nécessaire pour le stockage à -20C

**\*\*\* Les 20ul contiennent 0,1% de BSA.**

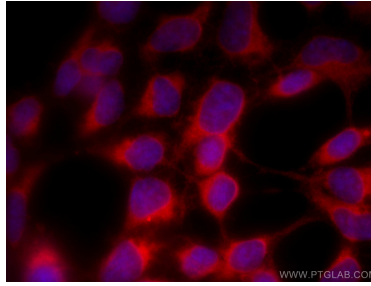
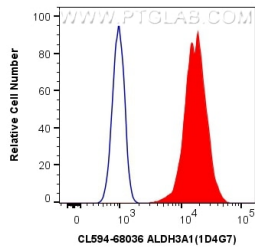
For technical support and original validation data for this product please contact:

T: 1 (888) 4PTGLAB (1-888-478-4522) (toll free  
in USA), or 1(312) 455-8498 (outside USA)

E: proteintech@ptglab.com  
W: ptglab.com

**This product is exclusively available under Proteintech Group brand and is not available to purchase from any other manufacturer.**

## Données de validation sélectionnées



1X10<sup>6</sup> HEK-293 cells were intracellularly stained with 0.4 ug CoraLite® 594 Anti-Human ALDH3A1 (CL594-68036, Clone:1D4G7) (red), or 0.4 ug Control Antibody. Cells were fixed with 4% PFA and permeabilized with Flow Cytometry Perm Buffer (PF00011-C).

Immunofluorescent analysis of (-20°C Ethanol) fixed HEK-293 cells using CoraLite® 594 ALDH3A1 antibody (CL594-68036, Clone: 1D4G7) at dilution of 1:200.