

À des fins de recherche uniquement

# Anticorps Polyclonal de lapin anti-GST Tag



Numéro de catalogue: **CL647-10000**

## Informations de base

Numéro de catalogue:

CL647-10000

Numéro d'acquisition GenBank:

FN315687

Méthode de purification:

Purifié par affinité contre l'antigène

Taille:

100ul , Concentration: 1000 µg/ml by Nanodrop;

Identification du gène (NCBI):

Nom complet:

Excitation/Emission maxima wavelengths:

654 nm / 674 nm

Hôte:

Lapin

MW calculé

26 kDa

Isotype:

IgG

## Applications

Applications testées:

FC (Intra)

Spécificité de l'espèce:

Protéine recombinante

## Informations générales

GST (Glutathione S-Transferase) is a widely used protein tag encoded by the *Schistosoma japonicum*. GST provides both an easily detectable tag and a simple purification process with little effect on the biological function of the protein of interest. This GST-fusion protein can then be purified from cells via its high affinity for glutathione. Antibodies to GST are useful for checking protein expression both in plaques and on western blots as well as for immunoaffinity purification of proteins expressed in cells. This antibody can be used to detect the GST tagged protein. This antibody can be used as Rabbit IgG control in FC.

## Stockage

Stockage:

Stocker à -20 °C. Éviter toute exposition à la lumière. Stable pendant un an après l'expédition.

Tampon de stockage:

PBS avec glycérol à 50 %, Proclin300 à 0,05 % et BSA à 0,5 %, pH 7,3.

L'aliquotage n'est pas nécessaire pour le stockage à -20C

**\*\*\* Les 20ul contiennent 0,1% de BSA.**

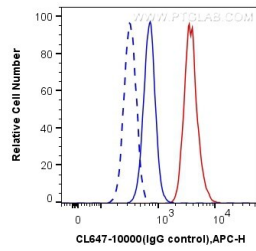
For technical support and original validation data for this product please contact:

T: 1 (888) 4PTGLAB (1-888-478-4522) (toll free in USA), or 1(312) 455-8498 (outside USA)

E: [proteintech@ptglab.com](mailto:proteintech@ptglab.com)  
W: [ptglab.com](http://ptglab.com)

**This product is exclusively available under Proteintech Group brand and is not available to purchase from any other manufacturer.**

## Données de validation sélectionnées



1X10<sup>6</sup> HeLa cells were intracellularly stained with 0.4 ug CoraLite® Plus 647 Anti-GST Tag (CL647-10000) (blue), or 0.4 ug CoraLite® 488-conjugated TRAP1 Rabbit PolyAb (CL488-10325, Clone: ) (red). Cells were fixed with 4% PFA and permeabilized with Flow Cytometry Perm Buffer (PF00011-C).