

À des fins de recherche uniquement

Anticorps Polyclonal de lapin anti-Cytokeratin 6A



Numéro de catalogue: CL647-10590

Informations de base

| | | |
|--|---|---|
| Numéro de catalogue: CL647-10590 | Numéro d'acquisition GenBank: BC008807 | Méthode de purification: Purification par affinité contre l'antigène |
| Taille: 100ul, Concentration: 1000 µg/ml by Nanodrop; | Identification du gène (NCBI): 3853 | Excitation/Emission maxima wavelengths: 654 nm / 674 nm |
| Hôte: Lapin | Nom complet: keratin 6A | |
| Isotype: IgG | MW calculé: 60 kDa | |
| Immunogen Catalog Number: AG0882 | MW observés: 56 kDa | |

Applications

Applications testées:
FC (Intra)

Spécificité de l'espèce:
Humain, rat, souris

Informations générales

Keratins are a large family of proteins that form the intermediate filament cytoskeleton of epithelial cells, which are classified into two major sequence types. Type I keratins are a group of acidic intermediate filament proteins, including K9-K23, and the hair keratins Ha1-Ha8. Type II keratins are the basic or neutral counterparts to the acidic type I keratins, including K1-K8, and the hair keratins, Hb1-Hb6. Keratin 6 is a type II keratin. It is used as marker for epidermal hyperproliferation and differentiation. There are three keratin 6 isoforms: keratin 6A, 6B and 6C. They share more than 99% identical DNA sequence.

Stockage

Stockage:
Stocker à -20 °C. Éviter toute exposition à la lumière. Stable pendant un an après l'expédition.

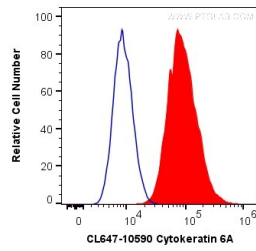
Tampon de stockage:
PBS avec glycérol à 50 %, Proclin300 à 0,05 % et BSA à 0,5 %, pH 7,3.
L'aliquotage n'est pas nécessaire pour le stockage à -20C

*** Les 20ul contiennent 0,1% de BSA.

For technical support and original validation data for this product please contact:
T: 1 (888) 4PTGLAB (1-888-478-4522) (toll free in USA), or 1(312) 455-8498 (outside USA) E: proteintech@ptglab.com W: ptglab.com

This product is exclusively available under Proteintech Group brand and is not available to purchase from any other manufacturer.

Données de validation sélectionnées



1X10⁶ HeLa cells were intracellularly stained with 0.2 ug Coralite® Plus 647 Anti-Human Cytokeratin 6A (CL647-10590) (red), or 0.2 ug Control Antibody (blue). Cells were fixed with 4% PFA and permeabilized with Flow Cytometry Perm Buffer (PF00011-C).