

À des fins de recherche uniquement

Anticorps Polyclonal de lapin anti-Glutamine Synthetase



Numéro de catalogue: **CL647-11037** **Phare**

Informations de base

Numéro de catalogue: CL647-11037	Numéro d'acquisition GenBank: BC011700	Méthode de purification: Purification par affinité contre l'antigène
Taille: 100ul , Concentration: 1000 µg/ml by Nanodrop;	Identification du gène (NCBI): 2752	Excitation/Emission maxima wavelengths: 654 nm / 674 nm
Hôte: Lapin	Nom complet: glutamate-ammonia ligase (glutamine synthetase)	
Isotype: IgG	MW calculé 374 aa, 42 kDa	
Immunogen Catalog Number: AG1510	MW observés: 40-42 kDa	

Applications

Applications testées:
FC (Intra)
Spécificité de l'espèce:
Humain, rat, souris

Informations générales

GLUL (Glutamine synthetase) is also named as GS, GLNS and belongs to the glutamine synthetase family. This enzyme has 2 functions: it catalyzes the production of glutamine and 4-aminobutanoate (gamma-aminobutyric acid, GABA), the latter in a pyridoxal phosphate-independent manner. By similarity, Essential for proliferation of fetal skin fibroblasts (PMID:18662667). Defects in GLUL are the cause of congenital systemic glutamine deficiency (CSGD). Organismal glutamine production is augmented secondary to an increase in the activity of glutamine synthetase in the lung and skeletal muscle (PMID:7630137). There are other bands with higher (66 kDa, 97 kDa) and lower (30 kDa) molecular weights also detected besides the 42 kDa band indicating the proteolysis of GLUL protein by the ubiquitin system (PMID:10091759).

Stockage

Stockage:
Stocker à -20 °C. Éviter toute exposition à la lumière. Stable pendant un an après l'expédition.
Tampon de stockage:
PBS avec glycérol à 50 %, Proclin300 à 0,05 % et BSA à 0,5 %, pH 7,3.
L'aliquotage n'est pas nécessaire pour le stockage à -20C

***** Les 20ul contiennent 0,1% de BSA.**

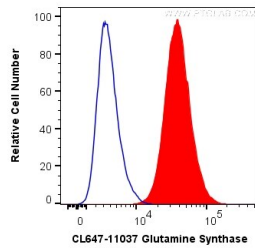
For technical support and original validation data for this product please contact:

T: 1 (888) 4PTGLAB (1-888-478-4522) (toll free in USA), or 1(312) 455-8498 (outside USA)

E: proteintech@ptglab.com
W: ptglab.com

This product is exclusively available under Proteintech Group brand and is not available to purchase from any other manufacturer.

Données de validation sélectionnées



1X10⁶ HepG2 cells were intracellularly stained with 0.2 ug CoraLite® Plus 647 Anti-Human Glutamine Synthetase (CL647-11037) (red), or 0.2 ug CL647-30000 Rabbit IgG (blue). Cells were fixed with 4% PFA and permeabilized with Flow Cytometry Perm Buffer (PF00011-C).