

À des fins de recherche uniquement

Anticorps Polyclonal de lapin anti-Annexin V



Numéro de catalogue: CL647-11060

Phare

Informations de base

Numéro de catalogue:	CL647-11060	Numéro d'acquisition GenBank:	BC018671	Méthode de purification:	Purification par affinité contre l'antigène
Taille:	100ul, Concentration: 1000 µg/ml by Nanodrop;	Identification du gène (NCBI):	308	Dilutions recommandées:	IF 1:50-1:500
Hôte:	Lapin	Nom complet:	annexin A5	Excitation/Emission maximale wavelengths:	654 nm / 674 nm
Isotype:	IgG	MW calculé:	36 kDa		
Immunogen Catalog Number:	AG1538	MW observés:	36 kDa		

Applications

Applications testées:	FC (Intra), IF	Contrôles positifs:	IF : cellules HeLa,
Spécificité de l'espèce:	Humain, porc, rat, souris		

Informations générales

Annexin A5 (ANXA5), is a member of the structurally related family of annexin proteins some of which have been implicated in membrane-related events along exocytotic and endocytotic pathways. Annexin 5 is a phospholipase A2 and protein kinase C inhibitory protein with calcium channel activity and a potential role in cellular signal transduction, inflammation, growth and differentiation. Annexin 5 has also been described as placental anticoagulant protein I, vascular anticoagulant-alpha, endonexin II, lipocortin V, placental protein 4 and anchorin CII.

Stockage

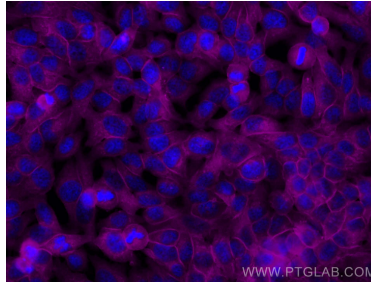
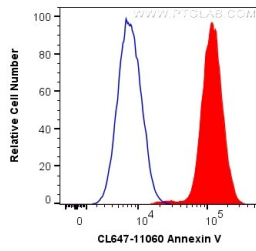
Stockage:
Stocker à -20 °C. Éviter toute exposition à la lumière. Stable pendant un an après l'expédition.
Tampon de stockage:
PBS avec glycérol à 50 %, Proclin300 à 0,05 % et BSA à 0,5 %, pH 7,3.
L'aliquotage n'est pas nécessaire pour le stockage à -20C

*** Les 20ul contiennent 0,1% de BSA.

For technical support and original validation data for this product please contact:
T: 1 (888) 4PTGLAB (1-888-478-4522) (toll free in USA), or 1(312) 455-8498 (outside USA) E: proteintech@ptglab.com W: ptglab.com

This product is exclusively available under Proteintech Group brand and is not available to purchase from any other manufacturer.

Données de validation sélectionnées



1X10⁶ HeLa cells were intracellularly stained with 0.2 ug CoraLite® Plus 647 Anti-Human Annexin V (CL647-11060) (red), or 0.2 ug isotype control (blue). Cells were fixed with 90% MeOH.

Immunofluorescent analysis of (-20°C Methanol) fixed HeLa cells using CoraLite® Plus 647 Annexin V antibody (CL647-11060) at dilution of 1:100.