

À des fins de recherche uniquement

Anticorps Polyclonal de lapin anti-NSD3



Numéro de catalogue: **CL647-11345** **Phare**

Informations de base

Numéro de catalogue:	CL647-11345	Numéro d'acquisition GenBank:	BC012059	Méthode de purification:	Purification par affinité contre l'antigène
Taille:	100ul , Concentration: 1000 µg/ml by Nanodrop;	Identification du gène (NCBI):	54904	Excitation/Emission maxima wavelengths:	654 nm / 674 nm
Hôte:	Lapin	Nom complet:	Wolf-Hirschhorn syndrome candidate 1-like 1		
Isotype:	IgG	MW calculé	1437 aa, 162 kDa		
Immunogen Catalog Number:	AG1894	MW observés:	160-170 kDa, 68-72 kDa		

Applications

Applications testées:
FC (Intra)
Spécificité de l'espèce:
Humain, rat

Informations générales

WHSC1L1, also named as NSD3 and DC28, belongs to the histone-lysine methyltransferase family and SET2 subfamily. It is histone methyltransferase. WHSC1L1 is a potently transforming oncogenes based on the number of altered phenotypes expressed by the cells. It contains a PWWP-domain that is a methyl-lysine recognition motif involved in histone code modification and epigenetic regulation of gene expression. Knockdown of WHSC1L1 in 8p11-12-amplified breast cancer cells resulted in profound loss of growth and survival of these cells. (PMID: 20940404). This antibody recognize the long isoform (160-170 kDa) and short isoform (68-72 kDa).

Stockage

Stockage:
Stocker à -20 °C. Éviter toute exposition à la lumière. Stable pendant un an après l'expédition.
Tampon de stockage:
PBS avec glycérol à 50 %, Proclin300 à 0,05 % et BSA à 0,5 %, pH 7,3.
L'aliquotage n'est pas nécessaire pour le stockage à -20C

***** Les 20ul contiennent 0,1% de BSA.**

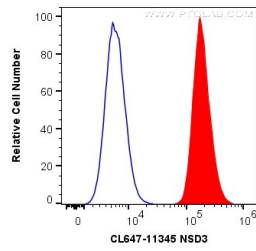
For technical support and original validation data for this product please contact:

T: 1 (888) 4PTGLAB (1-888-478-4522) (toll free in USA), or 1(312) 455-8498 (outside USA)

E: proteintech@ptglab.com
W: ptglab.com

This product is exclusively available under Proteintech Group brand and is not available to purchase from any other manufacturer.

Données de validation sélectionnées



1X10⁶ HeLa cells were intracellularly stained with 0.2 ug CoraLite® Plus 647 Anti-Human NSD3 (CL647-11345) (red), or 0.2 ug Isotype Control (blue). Cells were fixed with 4% PFA .