

À des fins de recherche uniquement

Anticorps Polyclonal de lapin anti- PKC Gamma



Numéro de catalogue: **CL647-14364**

Informations de base

Numéro de catalogue: CL647-14364	Numéro d'acquisition GenBank: BC047876	Méthode de purification: Purification par affinité contre l'antigène
Taille: 100ul , Concentration: 1000 µg/ml by Nanodrop;	Identification du gène (NCBI): 5582	Dilutions recommandées: WB 1:500-1:2000
Hôte: Lapin	Nom complet: protein kinase C, gamma	Excitation/Emission maxima wavelengths: 654 nm / 674 nm
Isotype: IgG	MW calculé 78 kDa	
Immunogen Catalog Number: AG5681	MW observés: 76-80 kDa	

Applications

Applications testées: WB	Contrôles positifs: WB : tissu cérébral de souris, tissu cérébral de rat
Spécificité de l'espèce: Humain, rat, souris	

Informations générales

Protein kinase C (PKC) is a family of serine- and threonine-specific protein kinases that can be activated by calcium and second messenger diacylglycerol. PKC family members phosphorylate a wide variety of protein targets and are known to be involved in diverse cellular signaling pathways. PKC gamma is a neuron-specific member of the classical PKCs and is activated and translocated to subcellular regions as a result of various stimuli, including diacylglycerol synthesis, increased intracellular Ca(2+) and phorbol esters. Defects in this protein have been associated with spinocerebellar ataxia type 14 (SCA14), an autosomal dominant neurodegenerative disease.

Stockage

Stockage:
Stocker à -20 °C. Éviter toute exposition à la lumière.
Tampon de stockage:
PBS avec glycérol à 50 %, Proclin300 à 0,05 % et BSA à 0,5 %, pH 7,3.
L'aliquotage n'est pas nécessaire pour le stockage à -20C

***** Les 20ul contiennent 0,1% de BSA.**

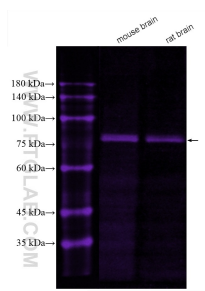
For technical support and original validation data for this product please contact:

T: 1 (888) 4PTGLAB (1-888-478-4522) (toll free
in USA), or 1(312) 455-8498 (outside USA)

E: proteintech@ptglab.com
W: ptglab.com

This product is exclusively available under Proteintech Group brand and is not available to purchase from any other manufacturer.

Données de validation sélectionnées



Various lysates were subjected to SDS PAGE followed by western blot with CL647-14364 (PKC Gamma antibody) at dilution of 1:1000 incubated at room temperature for 1.5 hours.