

À des fins de recherche uniquement

Anticorps Polyclonal de lapin anti-LC3



Numéro de catalogue: **CL647-14600**

Informations de base

Numéro de catalogue: CL647-14600	Numéro d'acquisition GenBank: BC067797	Méthode de purification: Purification par affinité contre l'antigène
Taille: 100ul , Concentration: 1000 µg/ml by Nanodrop;	Identification du gène (NCBI): 81631	Dilutions recommandées: IF 1:100-1:500
Hôte: Lapin	Nom complet: microtubule-associated protein 1 light chain 3 beta	Excitation/Emission maxima wavelengths: 654 nm / 674 nm
Isotype: IgG	MW calculé: 15 kDa	
Immunogen Catalog Number: AG6144		

Applications

Applications testées: FC (Intra), IF	Contrôles positifs: IF : cellules HepG2 traitées à la chloroquine,
Spécificité de l'espèce: Humain, rat, souris	

Informations générales

Map1LC3, also known as LC3, is the human homolog of yeast Atg8 and is involved in the formation of autophagosomal vacuoles, called autophagosomes. Three human Map1LC3 isoforms, MAP1LC3A, MAP1LC3B, and MAP1LC3C, undergo post-translational modifications during autophagy. And they differ in their post-translation modifications during autophagy. Map1LC3 also exists in two modified forms, an 18 kDa cytoplasmic form that was originally identified as a subunit of the microtubule-associated protein 1, and a 14-16 kDa form that is associated with the autophagosome membrane. This antibody can cross react with MAP1LC3A, MAP1LC3B, and MAP1LC3C.

Stockage

Stockage:
Stocker à -20 °C. Éviter toute exposition à la lumière. Stable pendant un an après l'expédition.
Tampon de stockage:
PBS avec glycérol à 50 %, Proclin300 à 0,05 % et BSA à 0,5 %, pH 7,3.
L'aliquotage n'est pas nécessaire pour le stockage à -20C

***** Les 20ul contiennent 0,1% de BSA.**

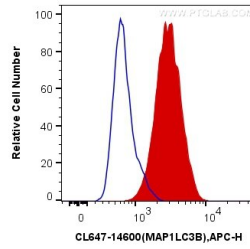
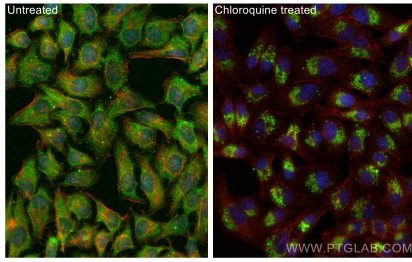
For technical support and original validation data for this product please contact:

T: 1 (888) 4PTGLAB (1-888-478-4522) (toll free in USA), or 1(312) 455-8498 (outside USA)

E: proteintech@ptglab.com
W: ptglab.com

This product is exclusively available under Proteintech Group brand and is not available to purchase from any other manufacturer.

Données de validation sélectionnées



Immunofluorescent analysis of (-20°C Ethanol) fixed Chloroquine treated HepG2 cells using CoraLite® Plus 647 LC3 antibody (CL647-14600) at dilution of 1:500.

1X10⁶ HeLa cells were intracellularly stained with 0.2 ug CoraLite® Plus 647 Anti-Human LC3 (CL647-14600) (red), or 0.2 ug Control Antibody. Cells were fixed with 4% PFA and permeabilized with Flow Cytometry Perm Buffer (PF00011-C).