

À des fins de recherche uniquement

# Anticorps Polyclonal de lapin anti-HSP60



Numéro de catalogue: **CL647-15282**

## Informations de base

|  |   |   |
|--|---|---|
| Numéro de catalogue:<br>CL647-15282                      | Numéro d'acquisition GenBank:<br>BC003030               | Méthode de purification:<br>Purification par affinité contre l'antigène |
| Taille:<br>100ul, Concentration: 1000 µg/ml by Nanodrop; | Identification du gène (NCBI):<br>3329                  | Excitation/Emission maxima wavelengths:<br>654 nm / 674 nm              |
| Hôte:<br>Lapin   | Nom complet:<br>heat shock 60kDa protein 1 (chaperonin) |   |
| Isotype:<br>IgG  | MW calculé:<br>61 kDa                                   |   |
| Immunogen Catalog Number:<br>AG7401                      | MW observés:<br>60 kDa                                  |   |

## Applications

Applications testées:  
FC (Intra)

Spécificité de l'espèce:  
Humain, rat, souris

## Informations générales

HSPD1, also known as HSP60, belongs to the chaperonin family and acts as a chaperone to enhance cell survival under physiological stresses. Hsp60 has been shown to be connected with many aspects of cell functions such as protein folding and assembling of polypeptide chains in mitochondria. Recently it has been reported that HSP60 is associated with apoptosis or inhibition of cancer cell growth. (21822415)

## Stockage

Stockage:  
Stocker à -20 °C. Éviter toute exposition à la lumière. Stable pendant un an après l'expédition.

Tampon de stockage:  
PBS avec glycérol à 50 %, Proclin300 à 0,05 % et BSA à 0,5 %, pH 7,3.

L'aliquotage n'est pas nécessaire pour le stockage à -20C

**\*\*\* Les 20ul contiennent 0,1% de BSA.**

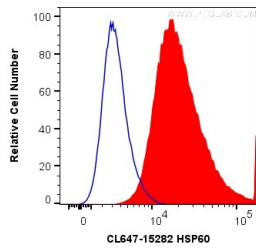
For technical support and original validation data for this product please contact:

T: 1 (888) 4PTGLAB (1-888-478-4522) (toll free in USA), or 1(312) 455-8498 (outside USA)

E: [proteintech@ptglab.com](mailto:proteintech@ptglab.com)  
W: [ptglab.com](http://ptglab.com)

**This product is exclusively available under Proteintech Group brand and is not available to purchase from any other manufacturer.**

## Données de validation sélectionnées



1X10<sup>6</sup> HepG2 cells were intracellularly stained with 0.2 ug CoraLite® Plus 647 Anti-Human HSP60 (CL647-15282) (red), or 0.2 ug isotype control (blue). Cells were fixed with 4% PFA and permeabilized with Flow Cytometry Perm Buffer (PF00011-C).