

À des fins de recherche uniquement

# Anticorps Polyclonal de lapin anti-Transgeline-2-spécifique



Numéro de catalogue: CL647-15508

Phare

## Informations de base

Numéro de catalogue:

CL647-15508

Taille:

100ul, Concentration: 1000 µg/ml by

Nanodrop;

Hôte:

Lapin

Isotype:

IgG

Numéro d'acquisition GenBank:

NM\_003564

Identification du gène (NCBI):

8407

Nom complet:

transgeline 2

MW calculé

22 kDa

MW observés:

22 kDa

Méthode de purification:

Purification par affinité contre l'antigène

Dilutions recommandées:

IF 1:50-1:500

Excitation/Emission maxima

wavelengths:

654 nm / 674 nm

## Applications

Applications testées:

FC (Intra), IF

Spécificité de l'espèce:

Humain

Contrôles positifs:

IF : cellules HepG2,

## Informations générales

The transgeline family is a group of proteins that belong to 22 kDa actin-related corpnin superfamily. Of all three isoforms, transgeline 1 is the best characterized. Transgeline 1, also known as SM22 alpha, is a specific marker for differentiated smooth muscle cells. Transgeline 2, also known as SM22 beta, is expressed by both smooth muscle and non-smooth muscle cells in a temporally and spatially regulated pattern. Transgeline 3, also known as NP25, is only found in highly differentiated neuronal cells. This antibody can bind transgeline 2 specifically, but not transgeline 1 or 3.

## Stockage

Stockage:

Stocker à -20 °C. Éviter toute exposition à la lumière. Stable pendant un an après l'expédition.

Tampon de stockage:

PBS avec glycérol à 50 %, Proclin300 à 0,05 % et BSA à 0,5 %, pH 7,3.

L'aliquotage n'est pas nécessaire pour le stockage à -20C

\*\*\* Les 20ul contiennent 0,1% de BSA.

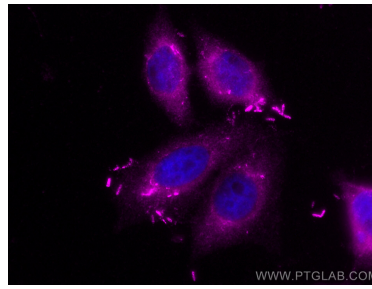
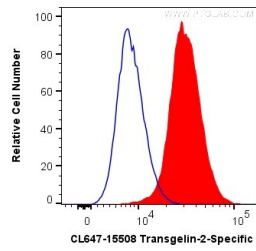
For technical support and original validation data for this product please contact:

T: 1 (888) 4PTGLAB (1-888-478-4522) (toll free in USA), or 1(312) 455-8498 (outside USA)

E: [proteintech@ptglab.com](mailto:proteintech@ptglab.com)  
W: [ptglab.com](http://ptglab.com)

This product is exclusively available under Proteintech Group brand and is not available to purchase from any other manufacturer.

## Données de validation sélectionnées



1X10<sup>6</sup> HepG2 cells were intracellularly stained with 0.2 ug CoraLite® Plus 647 Anti-Human Transgelin-2-specific (CL647-15508) (red), or 0.2 ug Control Antibody (blue). Cells were fixed with 4% PFA and permeabilized with Flow Cytometry Perm Buffer (PF00011-C).

Immunofluorescent analysis of (4% PFA) fixed HepG2 cells using CoraLite® Plus 647 Transgelin-2-specific antibody (CL647-15508) at dilution of 1:200.