

À des fins de recherche uniquement

Anticorps Polyclonal de lapin anti-Glucagon



Numéro de catalogue: **CL647-15954**

Informations de base

Numéro de catalogue:

CL647-15954

Taille:

100ul , Concentration: 1000 µg/ml by

Nanodrop;

Hôte:

Lapin

Isotype:

IgG

Immunogen Catalog Number:

AG8677

Numéro d'acquisition GenBank:

BC005278

Identification du gène (NCBI):

2641

Nom complet:

glucagon

MW calculé

180 aa, 21 kDa

Méthode de purification:

Purification par affinité contre l'antigène

Dilutions recommandées:

IF 1:50-1:500

Excitation/Emission maxima

wavelengths:

654 nm / 674 nm

Applications

Applications testées:

IF

Spécificité de l'espèce:

Humain, rat, souris

Contrôles positifs:

IF : tissu pancréatique de souris, tissu de cancer du pancréas humain

Informations générales

Glucagon is a 29-amino acid peptide hormone secreted from the pancreatic alpha cells with a powerful stimulatory effect on hepatic glucose production acting to increase plasma glucose levels. Glucagon is best known as the counter-regulatory hormone to insulin, and normal glucose homeostasis depends largely on the balanced secretion of insulin and glucagon from the pancreatic beta and alpha cells, respectively. The regulation of glucose metabolism by glucagon is mediated by its direct action on the peripheral tissues such as the liver and also by the brain. Glucagon is also released postprandially in a transient manner, which was shown to be involved in inhibition of food intake via reduction of meal size.

Stockage

Stockage:

Stocker à -20 °C. Éviter toute exposition à la lumière. Stable pendant un an après l'expédition.

Tampon de stockage:

PBS avec glycérol à 50 %, Proclin300 à 0,05 % et BSA à 0,5 %, pH 7,3.

L'aliquotage n'est pas nécessaire pour le stockage à -20C

***** Les 20ul contiennent 0,1% de BSA.**

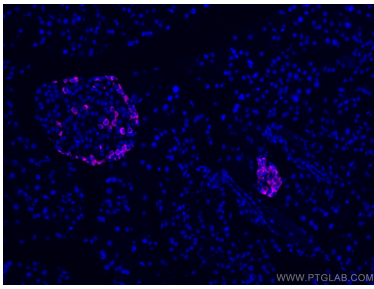
For technical support and original validation data for this product please contact:

T: 1 (888) 4PTGLAB (1-888-478-4522) (toll free in USA), or 1(312) 455-8498 (outside USA)

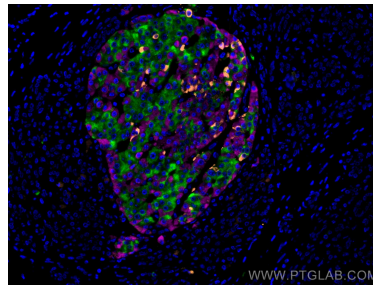
E: proteintech@ptglab.com
W: ptglab.com

This product is exclusively available under Proteintech Group brand and is not available to purchase from any other manufacturer.

Données de validation sélectionnées



Immunofluorescent analysis of (4% PFA) fixed mouse pancreas tissue using Coralite® Plus 647 Glucagon antibody (CL647-15954) at dilution of 1:200.



Immunofluorescent analysis of (4% PFA) fixed human pancreas cancer tissue using Coralite® Plus 647 Glucagon antibody (CL647-15954) at dilution of 1:200, Coralite® 488 INS antibody (CL488-66198, Clone: 4B6A7, green), SSTR2 antibody (20404-1-AP, orange).