

À des fins de recherche uniquement

Anticorps Polyclonal de lapin anti-Amphiregulin



Numéro de catalogue: **CL647-16036**

Phare

Informations de base

Numéro de catalogue:
CL647-16036

Taille:
100ul , Concentration: 1000 µg/ml by
Nanodrop;

Hôte:
Lapin

Isotype:
IgG

Immunogen Catalog Number:
AG8907

Numéro d'acquisition GenBank:
BC009799

Identification du gène (NCBI):

Nom complet:
amphiregulin

MW calculé
252 aa, 28 kDa

Méthode de purification:

Purification par affinité contre
l'antigène

Dilutions recommandées:
IF 1:50-1:500

Excitation/Emission maxima
wavelengths:
654 nm / 674 nm

Applications

Applications testées:
IF

Spécificité de l'espèce:
Humain

Contrôles positifs:

IF : tissu de cancer du côlon humain,

Informations générales

Amphiregulin (AREG) is one of the ligands of the epidermal growth factor receptor (EGFR). AREG plays a central role in mammary gland development and branching morphogenesis in organs and is expressed both in physiological and in cancerous tissues. The AREG protein is synthesized as a 252-amino acid transmembrane precursor, pro-AREG. At the plasma membrane, pro-AREG is subjected to sequential proteolytic cleavages within its ectodomain and is then released as the soluble AREG protein. Depending on the cell type and microenvironment, AREG can be produced in multiple cellular and mature forms using alternative pro-AREG cleavage sites and glycosylation motifs. Post-translational modifications of 50-kDa pro-AREG produces a major soluble 43-kDa form, 28-, 26-, 16-kDa membrane anchored forms, and soluble 21-, 19-, and 9-kDa forms (PMID: 9642297).

Stockage

Stockage:

Stocker à -20 °C. Éviter toute exposition à la lumière.

Tampon de stockage:

PBS avec glycérol à 50 %, Proclin300 à 0,05 % et BSA à 0,5 %, pH 7,3.

L'aliquotage n'est pas nécessaire pour le stockage à -20C

*** Les 20ul contiennent 0,1% de BSA.

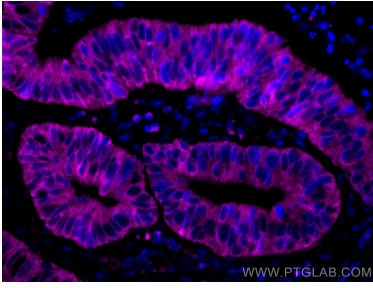
For technical support and original validation data for this product please contact:

T: 1 (888) 4PTGLAB (1-888-478-4522) (toll free
in USA), or 1(312) 455-8498 (outside USA)

E: proteintech@ptglab.com
W: ptglab.com

This product is exclusively available under Proteintech Group brand and is not available to purchase from any other manufacturer.

Données de validation sélectionnées



Immunofluorescent analysis of (4% PFA) fixed human colon cancer tissue using CoraLite® Plus 647 Amphiregulin antibody (CL647-16036) at dilution of 1:200.



Immunofluorescent analysis of (4% PFA) fixed human colon cancer tissue using CoraLite® Plus 647 Amphiregulin antibody (CL647-16036) at dilution of 1:200.