

À des fins de recherche uniquement

Anticorps Polyclonal de lapin anti-Desmin



Numéro de catalogue: **CL647-16520**

Informations de base

Numéro de catalogue:	CL647-16520	Numéro d'acquisition GenBank:	BC032116	Méthode de purification:	Purification par affinité contre l'antigène
Taille:	100ul , Concentration: 1000 µg/ml by Nanodrop;	Identification du gène (NCBI):	1674	Dilutions recommandées:	IF 1:50-1:500
Hôte:	Lapin	Nom complet:	desmin	Excitation/Emission maxima wavelengths:	654 nm / 674 nm
Isotype:	IgG	MW calculé	470 aa, 54 kDa		
Immunogen Catalog Number:	AG9742	MW observés:	52-53 kDa		

Applications

Applications testées:	FC (Intra), IF	Contrôles positifs:	IF : tissu cardiaque de souris,
Spécificité de l'espèce:	Humain, rat, souris		

Informations générales

Desmin is the main intermediate filament protein in skeletal and cardiac muscle cells and is essential for both the structural integrity and the survival of muscle cells. As an abundant muscle-specific protein, desmin has been widely used as a marker of muscle derived tumors. Anti-desmin is also valuable in the differential diagnosis of tumors of uncertain origin.

Stockage

Stockage:
Stocker à -20 °C. Éviter toute exposition à la lumière.
Tampon de stockage:
PBS avec glycérol à 50 %, Proclin300 à 0,05 % et BSA à 0,5 %, pH 7,3.
L'aliquotage n'est pas nécessaire pour le stockage à -20C

***** Les 20ul contiennent 0,1% de BSA.**

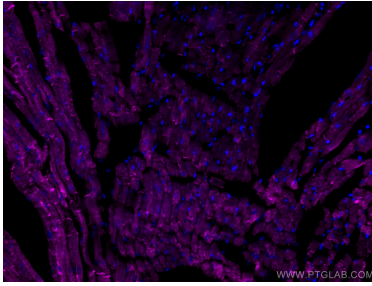
For technical support and original validation data for this product please contact:

T: 1 (888) 4PTGLAB (1-888-478-4522) (toll free in USA), or 1(312) 455-8498 (outside USA)

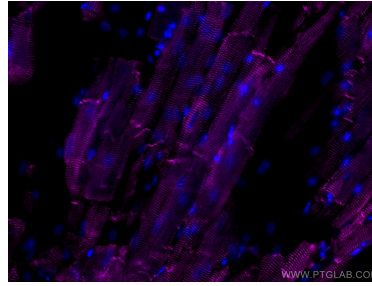
E: proteintech@ptglab.com
W: ptglab.com

This product is exclusively available under Proteintech Group brand and is not available to purchase from any other manufacturer.

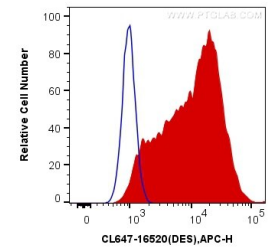
Données de validation sélectionnées



Immunofluorescent analysis of (4% PFA) fixed mouse heart tissue using CoraLite® Plus 647 Desmin antibody (CL647-16520) at dilution of 1:200.



Immunofluorescent analysis of (4% PFA) fixed mouse heart tissue using CoraLite® Plus 647 Desmin antibody (CL647-16520) at dilution of 1:200.



1X10⁶ C2C12 cells were intracellularly stained with 0.4 ug CoraLite® Plus 647 Anti-Human Desmin (CL647-16520) (red), or 0.4 ug Control Antibody. Cells were fixed with 4% PFA and permeabilized with Flow Cytometry Perm Buffer (PF00011-C).