

À des fins de recherche uniquement

# Anticorps Polyclonal de lapin anti-Synaptophysin



Numéro de catalogue: **CL647-17785**

## Informations de base

Numéro de catalogue: CL647-17785	Numéro d'acquisition GenBank: BC064550	Méthode de purification: Purification par affinité contre l'antigène
Taille: 100ul , Concentration: 1000 µg/ml by Nanodrop;	Identification du gène (NCBI): 6855	Dilutions recommandées: IF 1:50-1:500
Hôte: Lapin	Nom complet: synaptophysin	Excitation/Emission maxima wavelengths: 654 nm / 674 nm
Isotype: IgG	MW calculé 313 aa, 34 kDa	
Immunogen Catalog Number: AG11781	MW observés: 38-40 kDa	

## Applications

Applications testées: FC (Intra), IF	Contrôles positifs: IF : tissu pancréatique de souris, tissu cérébral de souris
Spécificité de l'espèce: Humain, souris	

## Informations générales

Synaptophysin (SYP, also known as major synaptic vesicle protein p38) is a 38-kDa integral membrane glycoprotein that regulates synaptic vesicle endocytosis. It is the most abundant synaptic vesicle protein by mass. Synaptophysin is present in neuroendocrine cells and neurons that participate in synaptic transmission. Synaptophysin is a useful marker for identification of neuroendocrine cells and neoplasms. (PMID: 3010302; 21658579)

## Stockage

**Stockage:**  
Stocker à -20 °C. Éviter toute exposition à la lumière.  
**Tampon de stockage:**  
PBS avec glycérol à 50 %, Proclin300 à 0,05 % et BSA à 0,5 %, pH 7,3.  
L'aliquotage n'est pas nécessaire pour le stockage à -20C

**\*\*\* Les 20ul contiennent 0,1% de BSA.**

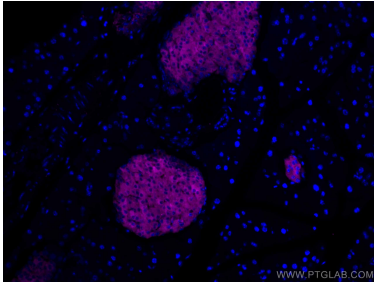
For technical support and original validation data for this product please contact:

T: 1 (888) 4PTGLAB (1-888-478-4522) (toll free in USA), or 1(312) 455-8498 (outside USA)

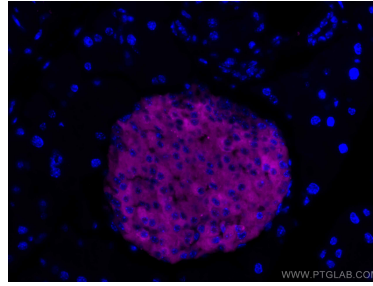
E: [proteintech@ptglab.com](mailto:proteintech@ptglab.com)  
W: [ptglab.com](http://ptglab.com)

**This product is exclusively available under Proteintech Group brand and is not available to purchase from any other manufacturer.**

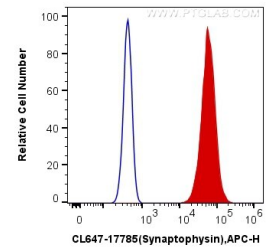
## Données de validation sélectionnées



Immunofluorescent analysis of (4% PFA) fixed mouse pancreas tissue using CoraLite® Plus 647 Synaptophysin antibody (CL647-17785) at dilution of 1:200.



Immunofluorescent analysis of (4% PFA) fixed mouse pancreas tissue using CoraLite® Plus 647 Synaptophysin antibody (CL647-17785) at dilution of 1:200.



1X10<sup>6</sup> PC-12 cells were intracellularly stained with 0.4 ug CoraLite® Plus 647 Anti-Human Synaptophysin (CL647-17785) (red), or 0.4 ug Control Antibody. Cells were fixed with 4% PFA and permeabilized with Flow Cytometry Perm Buffer (PF00011-C).