

À des fins de recherche uniquement

Anticorps Polyclonal de lapin anti-CDK1-Specific



Numéro de catalogue: **CL647-19532** **Phare**

Informations de base

Numéro de catalogue: CL647-19532	Numéro d'acquisition GenBank: NM_001786	Méthode de purification: Purification par affinité contre l'antigène
Taille: 100ul, Concentration: 1000 µg/ml by Nanodrop;	Identification du gène (NCBI): 983	Excitation/Emission maxima wavelengths: 654 nm / 674 nm
Hôte: Lapin	Nom complet: cell division cycle 2, G1 to S and G2 to M	
Isotype: IgG	MW calculé: 34 kDa	
	MW observés: 34 kDa	

Applications

Applications testées:
FC (Intra)

Spécificité de l'espèce:
Humain, rat, souris

Informations générales

CDK1, also named as CDC2, belongs to the protein kinase superfamily, CMGC Ser/Thr protein kinase family and CDC2/CDKX subfamily. CDK1 plays a key role in the control of the eukaryotic cell cycle. It is required in higher cells for entry into S-phase and mitosis. CDK1 is a catalytic subunit of the highly conserved protein kinase complex known as M-phase promoting factor (MPF), which is essential for G1/S and G2/M phase transitions of eukaryotic cell cycle. It is a component of the kinase complex that phosphorylates the repetitive C-terminus of RNA polymerase II. Mitotic cyclins stably associate with CDK1 and function as regulatory subunits. CDK1 has 2 isoforms produced by alternative splicing with the molecular mass of 34 kDa and 27 kDa.

Stockage

Stockage:
Stocker à -20 °C. Éviter toute exposition à la lumière. Stable pendant un an après l'expédition.

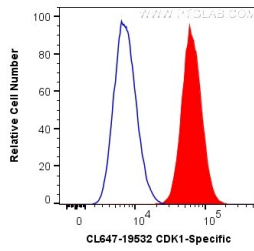
Tampon de stockage:
PBS avec glycérol à 50 %, Proclin300 à 0,05 % et BSA à 0,5 %, pH 7,3.
L'aliquotage n'est pas nécessaire pour le stockage à -20C

***** Les 20ul contiennent 0,1% de BSA.**

For technical support and original validation data for this product please contact:
T: 1 (888) 4PTGLAB (1-888-478-4522) (toll free in USA), or 1(312) 455-8498 (outside USA) E: proteintech@ptglab.com W: ptglab.com

This product is exclusively available under Proteintech Group brand and is not available to purchase from any other manufacturer.

Données de validation sélectionnées



1×10^6 HeLa cells were intracellularly stained with 0.2 μ g Coralite® Plus 647 Anti-Human CDK1-Specific (CL647-19532) (red), or 0.2 μ g CL647-30000 Rabbit IgG (blue). Cells were fixed and permeabilized with Transcription Factor Staining Buffer Kit (PF00011).