

À des fins de recherche uniquement

# Anticorps Polyclonal de lapin anti-LDHA-Specific



Numéro de catalogue: CL647-19987

Phare

## Informations de base

Numéro de catalogue:

CL647-19987

Numéro d'acquisition GenBank:

NM\_005566

Méthode de purification:

Purification par affinité contre l'antigène

Taille:

100ul, Concentration: 1000 µg/ml by 3939

Identification du gène (NCBI):

3939

Excitation/Emission maxima wavelengths:

654 nm / 674 nm

Nanodrop;

Nom complet:

lactate dehydrogenase A

Hôte:

Lapin

MW calculé

Isotype:

37 kDa

IgG

MW observés:

32-37 kDa

## Applications

Applications testées:

FC (Intra)

Spécificité de l'espèce:

Humain, rat, souris

## Informations générales

Lactate dehydrogenase (LDH) is composed of A subunits predominate in skeletal muscle and B subunits are abundantly produced in brain and heart. The LDHA (lactate dehydrogenase A) and COPB1 (coatomer protein complex, subunit beta 1) genes, are involved in energy metabolism and protein transport processes. Both genes might play important roles in muscle development. It has some isoforms with the molecular mass of 27-40 kDa and can form a homotetramer (PMID:11276087). This antibody is specific to LDHA and has no cross reaction to LDHB and LDHC.

## Stockage

Stockage:

Stocker à -20 °C. Éviter toute exposition à la lumière. Stable pendant un an après l'expédition.

Tampon de stockage:

PBS avec glycérol à 50 %, Proclin300 à 0,05 % et BSA à 0,5 %, pH 7,3.

L'aliquotage n'est pas nécessaire pour le stockage à -20C

\*\*\* Les 20ul contiennent 0,1% de BSA.

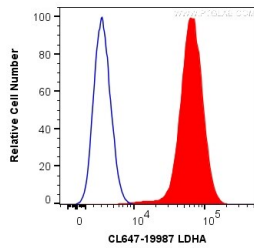
For technical support and original validation data for this product please contact:

T: 1 (888) 4PTGLAB (1-888-478-4522) (toll free in USA), or 1(312) 455-8498 (outside USA)

E: [proteintech@ptglab.com](mailto:proteintech@ptglab.com)  
W: [ptglab.com](http://ptglab.com)

This product is exclusively available under Proteintech Group brand and is not available to purchase from any other manufacturer.

## Données de validation sélectionnées



1X10<sup>6</sup> HepG2 cells were intracellularly stained with 0.2 ug CoraLite® Plus 647 Anti-Human LDHA-Specific (CL647-19987) (red), or 0.2 ug Isotype Control (blue). Cells were fixed and permeabilized with Transcription Factor Staining Buffer Kit (PF00011).