

À des fins de recherche uniquement

# Anticorps Polyclonal de lapin anti-IGF2R-Specific



Numéro de catalogue: **CL647-20253**

## Informations de base

Numéro de catalogue: CL647-20253	Numéro d'acquisition GenBank: NM_000876	Méthode de purification: Purification par affinité contre l'antigène
Taille: 100ul , Concentration: 1000 µg/ml by Nanodrop;	Identification du gène (NCBI): 3482	Excitation/Emission maxima wavelengths: 654 nm / 674 nm
Hôte: Lapin	Nom complet: insulin-like growth factor 2 receptor	
Isotype: IgG	MW calculé: 274 kDa	
	MW observés: 300 kDa	

## Applications

Applications testées:  
FC (Intra)

Spécificité de l'espèce:  
Humain

## Informations générales

IGF2R, also named as MPRI, CI Man-6-P receptor, CI-MPR, M6PR, IGF-II receptor, M6P/IGF2R, MPR 300 and CD222, belongs to the MRL1/IGF2R family. IGF2R transports of phosphorylated lysosomal enzymes from the Golgi complex and the cell surface to lysosomes. IGF2R is a lysosomal enzymes bearing phosphomannosyl residues bind specifically to mannose-6-phosphate receptors in the Golgi apparatus and the resulting receptor-ligand complex is transported to an acidic prelysosomal compartment where the low pH mediates the dissociation of the complex. This receptor also binds IGF2. IGF2R acts as a positive regulator of T-cell coactivation, by binding DPP4. The antibody is specific to IGF2R.

## Stockage

Stockage:  
Stocker à -20 °C. Éviter toute exposition à la lumière. Stable pendant un an après l'expédition.

Tampon de stockage:  
PBS avec glycérol à 50 %, Proclin300 à 0,05 % et BSA à 0,5 %, pH 7,3.  
L'aliquotage n'est pas nécessaire pour le stockage à -20C

**\*\*\* Les 20ul contiennent 0,1% de BSA.**

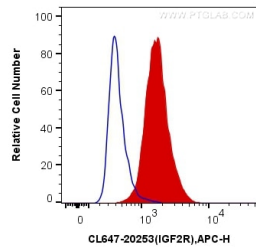
For technical support and original validation data for this product please contact:

T: 1 (888) 4PTGLAB (1-888-478-4522) (toll free in USA), or 1(312) 455-8498 (outside USA)

E: [proteintech@ptglab.com](mailto:proteintech@ptglab.com)  
W: [ptglab.com](http://ptglab.com)

**This product is exclusively available under Proteintech Group brand and is not available to purchase from any other manufacturer.**

## Données de validation sélectionnées



1X10<sup>6</sup> HepG2 cells were intracellularly stained with 0.2 ug CoraLite® Plus 647 Anti-Human IGF2R-Specific (CL647-20253) (red), or 0.2 ug Control Antibody. Cells were fixed with 4% PFA and permeabilized with Flow Cytometry Perm Buffer (PF00011-C).