

À des fins de recherche uniquement

# Anticorps Polyclonal de lapin anti-EZH2



Numéro de catalogue: **CL647-21800**

Phare

## Informations de base

Numéro de catalogue: CL647-21800	Numéro d'acquisition GenBank: BC010858	Méthode de purification: Purification par affinité contre l'antigène
Taille: 100ul , Concentration: 1000 µg/ml by Nanodrop;	Identification du gène (NCBI): 2146	Excitation/Emission maxima wavelengths: 654 nm / 674 nm
Hôte: Lapin	Nom complet: enhancer of zeste homolog 2 (Drosophila)	
Isotype: IgG	MW calculé 751 aa, 86 kDa	
Immunogen Catalog Number: AG16789	MW observés: 90-102 kDa	

## Applications

Applications testées:  
FC (Intra)

Spécificité de l'espèce:  
Humain, rat, souris

## Informations générales

EZH2 (enhancer of zeste homologue 2, also known as KMT6) is a member of Polycomb group (PcG) family and encodes a histone methyl transferase that has an essential role in promoting histone H3 lysine 27 trimethylation (H3K27me3) and epigenetic gene silencing. EZH2 is important for cell proliferation and inhibition of cell differentiation, and is implicated in cancer progression. Overexpression of EZH2 is a marker of advanced and metastatic disease in many solid tumors, including prostate and breast cancer. This antibody detected EZH2 protein as a single band with a molecular weight (MW) of 91-100 kDa in multiple cell lines. The phosphorylation may result in the higher molecular weight (calculated MW as 80-86 kDa). (20935635, 21367748)

## Stockage

Stockage:  
Stocker à -20 °C. Éviter toute exposition à la lumière. Stable pendant un an après l'expédition.

Tampon de stockage:  
PBS avec glycérol à 50 %, Proclin300 à 0,05 % et BSA à 0,5 %, pH 7,3.  
L'aliquotage n'est pas nécessaire pour le stockage à -20C

**\*\*\* Les 20ul contiennent 0,1% de BSA.**

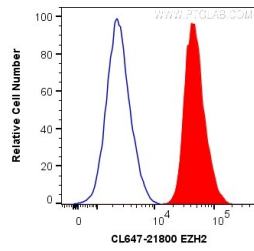
For technical support and original validation data for this product please contact:

T: 1 (888) 4PTGLAB (1-888-478-4522) (toll free in USA), or 1(312) 455-8498 (outside USA)

E: [proteintech@ptglab.com](mailto:proteintech@ptglab.com)  
W: [ptglab.com](http://ptglab.com)

**This product is exclusively available under Proteintech Group brand and is not available to purchase from any other manufacturer.**

## Données de validation sélectionnées



1X10<sup>6</sup> HepG2 cells were intracellularly stained with 0.2 ug CoraLite® Plus 647 Anti-Human EZH2 (CL647-21800) (red), or 0.2 ug 0.2 ug CL647 rabbit Isotype Control (blue). Cells were fixed and permeabilized with Transcription Factor Staining Buffer Kit (PF00011).