

À des fins de recherche uniquement

Anticorps Polyclonal de lapin anti- PKC Alpha



Numéro de catalogue: **CL647-21991** **Phare**

Informations de base

Numéro de catalogue:	CL647-21991	Numéro d'acquisition GenBank:	AK055431	Méthode de purification:	Purification par affinité contre l'antigène
Taille:	100ul , Concentration: 1000 µg/ml by Nanodrop;	Identification du gène (NCBI):	5578	Excitation/Emission maxima wavelengths:	654 nm / 674 nm
Hôte:	Lapin	Nom complet:	protein kinase C, alpha		
Isotype:	IgG	MW calculé:	77 kDa		
Immunogen Catalog Number:	AG17275	MW observés:	77 kDa		

Applications

Applications testées:
FC (Intra)
Spécificité de l'espèce:
Humain, rat, souris

Informations générales

Protein kinase C (PKC) is a family of serine- and threonine-specific protein kinases that can be activated by calcium and the second messenger diacylglycerol. PKC family members phosphorylate a wide variety of protein targets and are known to be involved in diverse cellular signaling pathways. PKC family members also serve as major receptors for phorbol esters, a class of tumor promoters. Each member of the PKC family has a specific expression profile and is believed to play a distinct role in cells. PRKCA is one of the PKC family members. This kinase has been reported to play roles in many different cellular processes, such as cell adhesion, cell transformation, cell cycle checkpoint, and cell volume control. Knockout studies in mice suggest that this kinase may be a fundamental regulator of cardiac contractility and Ca(2+) handling in myocytes.

Stockage

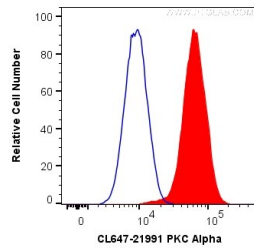
Stockage:
Stocker à -20 °C. Éviter toute exposition à la lumière. Stable pendant un an après l'expédition.
Tampon de stockage:
PBS avec glycérol à 50 %, Proclin300 à 0,05 % et BSA à 0,5 %, pH 7,3.
L'aliquotage n'est pas nécessaire pour le stockage à -20C

***** Les 20ul contiennent 0,1% de BSA.**

For technical support and original validation data for this product please contact:
T: 1 (888) 4PTGLAB (1-888-478-4522) (toll free in USA), or 1(312) 455-8498 (outside USA)
E: proteintech@ptglab.com
W: ptglab.com

This product is exclusively available under Proteintech Group brand and is not available to purchase from any other manufacturer.

Données de validation sélectionnées



1X10⁶ HeLa cells were intracellularly stained with 0.2 ug Coralite® Plus 647 Anti-Human PKC Alpha (CL647-21991) (red), or 0.2 ug Isotype Control (blue). Cells were fixed with 4% PFA and permeabilized with Flow Cytometry Perm Buffer (PF00011-C).