

À des fins de recherche uniquement

Anticorps Polyclonal de lapin anti-LHCGR



Numéro de catalogue: **CL647-26424** **Phare**

Informations de base

Numéro de catalogue: CL647-26424	Numéro d'acquisition GenBank: BC157028	Méthode de purification: Purification par affinité contre l'antigène
Taille: 100ul , Concentration: 1000 µg/ml by Nanodrop;	Identification du gène (NCBI): 3973	Dilutions recommandées: IF 1:50-1:500
Hôte: Lapin	Nom complet: LHCGR	Excitation/Emission maxima wavelengths: 654 nm / 674 nm
Isotype: IgG	MW calculé: 699 aa, 79 kDa	
Immunogen Catalog Number: AG19259	MW observés: 100 kDa	

Applications

Applications testées: FC (Intra), IF	Contrôles positifs: IF : tissu ovarien de souris,
Spécificité de l'espèce: Humain, souris	

Informations générales

LHCGR, also known as LHR or LSHR, belongs to the rhodopsin-like family of G protein-coupled receptors (GPCRs) and plays a crucial role in the regulation of gonadal functions by stimulating steroidogenesis in response to luteinizing hormone (LH) or hCG (PMID: 15866423). Mutations in LHCGR gene result in familial male-limited precocious puberty, Leydig cell hypoplasia, and empty follicle syndrome (PMID: 30711030). LHCGR protein consists of 699 amino acids with a calculated molecular weight of 79 kDa. Due to massive glycosylation, the molecular mass of the mature LHCGR is higher (85-100 kDa) than the predicted molecular protein mass of 79 kDa (PMID: 23686864; 15866423; 29075189; 15969756).

Stockage

Stockage:
Stocker à -20 °C. Éviter toute exposition à la lumière. Stable pendant un an après l'expédition.
Tampon de stockage:
PBS avec glycérol à 50 %, Proclin300 à 0,05 % et BSA à 0,5 %, pH 7,3.
L'aliquotage n'est pas nécessaire pour le stockage à -20C

***** Les 20ul contiennent 0,1% de BSA.**

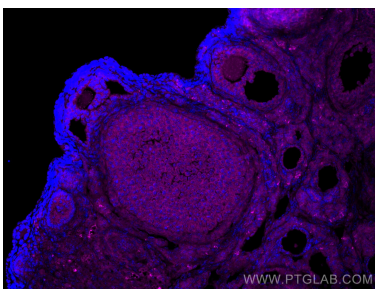
For technical support and original validation data for this product please contact:

T: 1 (888) 4PTGLAB (1-888-478-4522) (toll free in USA), or 1(312) 455-8498 (outside USA)

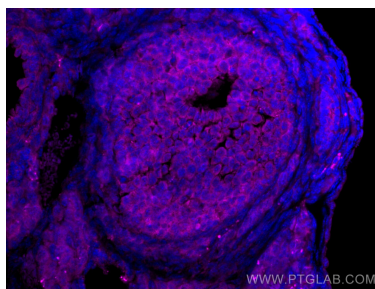
E: proteintech@ptglab.com
W: ptglab.com

This product is exclusively available under Proteintech Group brand and is not available to purchase from any other manufacturer.

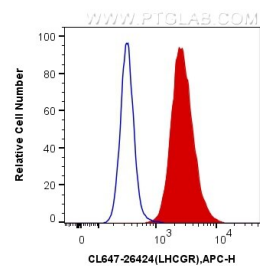
Données de validation sélectionnées



Immunofluorescent analysis of (4% PFA) fixed mouse ovary tissue using CoraLite® Plus 647 LHCGR antibody (CL647-26424) at dilution of 1:200.



Immunofluorescent analysis of (4% PFA) fixed mouse ovary tissue using CoraLite® Plus 647 LHCGR antibody (CL647-26424) at dilution of 1:200.



1X10⁶ Jurkat cells were intracellularly stained with 0.4 ug CoraLite® Plus 647 Anti-Human LHCGR (CL647-26424) (red), or 0.4 ug x. Cells were fixed with 4% PFA and permeabilized with Flow Cytometry Perm Buffer (PF00011-C).