

À des fins de recherche uniquement

# Anticorps Polyclonal de lapin anti-Bcl-XL



Numéro de catalogue: **CL647-26967**

## Informations de base

Numéro de catalogue: CL647-26967	Numéro d'acquisition GenBank: BC019307	Méthode de purification: Purification par affinité contre l'antigène
Taille: 100ul , Concentration: 1000 µg/ml by Nanodrop;	Identification du gène (NCBI): 598	Dilutions recommandées: IF 1:50-1:500
Hôte: Lapin	Nom complet: BCL2-like 1	Excitation/Emission maximum wavelengths: 654 nm / 674 nm
Isotype: IgG	MW calculé: 26 kDa	
Immunogen Catalog Number: AG25604	MW observés: 30 kDa	

## Applications

Applications testées: FC (Intra), IF	Contrôles positifs: IF : cellules HepG2,
Spécificité de l'espèce: Humain, souris	

## Informations générales

BCL2L1 is a member of the BCL-2 protein family. BCL2L1 is expressed as three isoforms, Bcl-X(L), Bcl-X(s) and Bcl-X(beta), and is located at the outer mitochondrial membrane. The Bcl-XL isoform is a 233 amino acid protein, acting as an apoptotic inhibitor. Bcl-XL can form heterodimers with BAX, BAK or BCL2, and the heterodimerization with BAX does not seem to be required for anti-apoptotic activity. The Bcl-XS isoform is a shorter variant that is 178 amino acids in length and lacks a 63 amino acid region (amino acids 126-188), acting as an apoptotic activator. This antibody can recognize Bcl-XL, Bcl-XS and Bcl-X(Beta).

## Stockage

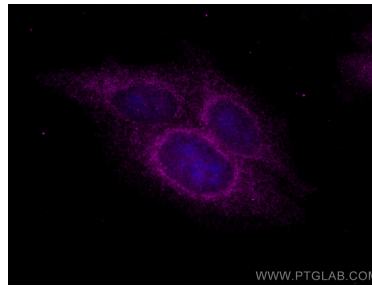
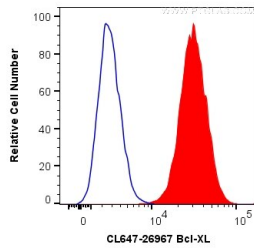
**Stockage:**  
Stocker à -20 °C. Éviter toute exposition à la lumière. Stable pendant un an après l'expédition.  
**Tampon de stockage:**  
PBS avec glycérol à 50 %, Proclin300 à 0,05 % et BSA à 0,5 %, pH 7,3.  
L'aliquotage n'est pas nécessaire pour le stockage à -20C

**\*\*\* Les 20ul contiennent 0,1% de BSA.**

For technical support and original validation data for this product please contact:  
T: 1 (888) 4PTGLAB (1-888-478-4522) (toll free in USA), or 1(312) 455-8498 (outside USA)      E: [proteintech@ptglab.com](mailto:proteintech@ptglab.com)  
W: [ptglab.com](http://ptglab.com)

**This product is exclusively available under Proteintech Group brand and is not available to purchase from any other manufacturer.**

## Données de validation sélectionnées



1X10<sup>6</sup> Jurkat cells were intracellularly stained with 0.2 ug CoraLite® Plus 647 Anti-Human Bcl-XL (CL647-26967) (red), or 0.2 ug CL647-30000 Rabbit IgG (blue). Cells were fixed with 4% PFA and permeabilized with Flow Cytometry Perm Buffer (PF00011-C).

Immunofluorescent analysis of (4% PFA) fixed HepG2 cells using CoraLite® Plus 647 Bcl-XL antibody (CL647-26967) at dilution of 1:200.