

À des fins de recherche uniquement

Anticorps Monoclonal anti-CD20

Numéro de catalogue: **CL647-60271**



Informations de base

Numéro de catalogue: CL647-60271	Numéro d'acquisition GenBank: BC002807	Méthode de purification: Purification par protéine A
Taille: 100ul , Concentration: 1000 µg/ml by Nanodrop;	Identification du gène (NCBI): 931	CloneNo.: 4A7G3
Hôte: Mouse	Nom complet: membrane-spanning 4-domains, subfamily A, member 1	Dilutions recommandées: IF 1:50-1:500
Isotype: IgG2b	MW calculé 297 aa, 33 kDa	Excitation/Emission maxima wavelengths: 654 nm / 674 nm
Immunogen Catalog Number: AG17309		

Applications

Applications testées: FC (Intra), IF	Contrôles positifs: IF : tissu d'amygdalite humain, tissu de cancer du poumon humain
Spécificité de l'espèce: Humain	

Informations générales

CD20 is a 33-37 kDa transmembrane phosphoprotein. CD20 is a B-lymphocyte surface molecule that is widely expressed during B-cell ontogeny, from early pre-B-cell developmental stages until final differentiation into plasma cells. CD20 functions as calcium-permeable cation channel. It is involved in the regulation of B-cell activation and proliferation. CD20 serves as a useful target for antibody-mediated therapeutic depletion of B-cells.

Stockage

Stockage:
Stocker à -20 °C. Éviter toute exposition à la lumière. Stable pendant un an après l'expédition.
Tampon de stockage:
PBS avec glycérol à 50 %, Proclin300 à 0,05 % et BSA à 0,5 %, pH 7,3.
L'aliquotage n'est pas nécessaire pour le stockage à -20C

***** Les 20ul contiennent 0,1% de BSA.**

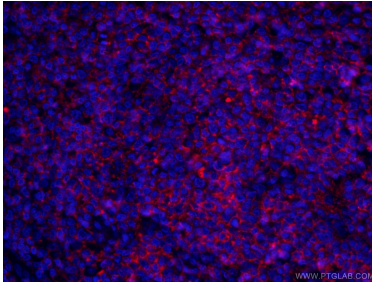
For technical support and original validation data for this product please contact:

T: 1 (888) 4PTGLAB (1-888-478-4522) (toll free
in USA), or 1(312) 455-8498 (outside USA)

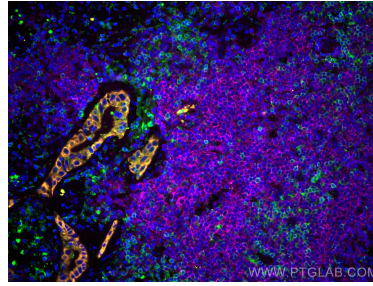
E: proteintech@ptglab.com
W: ptglab.com

This product is exclusively available under Proteintech Group brand and is not available to purchase from any other manufacturer.

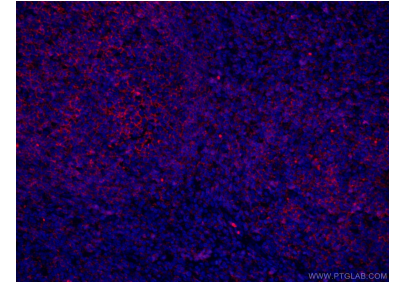
Données de validation sélectionnées



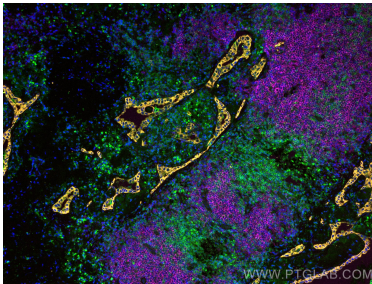
Immunofluorescent analysis of (4% PFA) fixed human tonsillitis tissue using CL647-60271 (CD20 antibody) at dilution of 1:100 and CoraLite488-Conjugated AffiniPure Goat Anti-Mouse IgG(H+L).



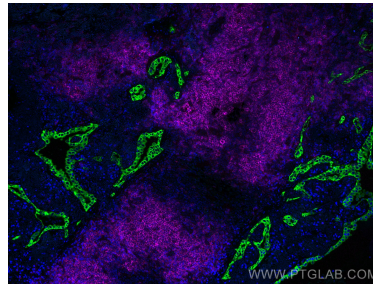
Immunofluorescent analysis of (4% PFA) fixed human lung cancer tissue using CoraLite® Plus 647 CD20 antibody (CL647-60271, Clone: 4A7G3) at dilution of 1:100, CoraLite®488 CD3 antibody (CL488-60181, Clone: 3F3A1, green), CoraLite®555 pan-keratin antibody (CL555-26411, orange).



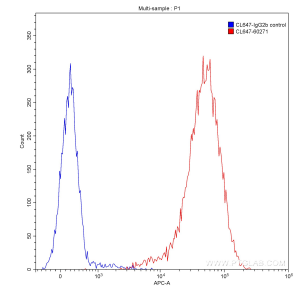
Immunofluorescent analysis of (4% PFA) fixed human tonsillitis tissue using CL647-60271 (CD20 antibody) at dilution of 1:100 and CoraLite488-Conjugated AffiniPure Goat Anti-Mouse IgG(H+L).



Immunofluorescent analysis of (4% PFA) fixed human lung cancer tissue using CoraLite® Plus 647 CD20 antibody (CL647-60271, Clone: 4A7G3) at dilution of 1:100, CoraLite®488 CD3 antibody (CL488-60181, Clone: 3F3A1, green), CoraLite®555 pan-keratin antibody (CL555-26411, orange).



Immunofluorescent analysis of (4% PFA) fixed human lung cancer tissue using CoraLite® Plus 647 CD20 antibody (CL647-60271, Clone: 4A7G3) at dilution of 1:100, CoraLite®488 pan-keratin antibody (CL488-26411, green).



1x10⁶ Raji cells were stained with 0.20 ug CoraLite® Plus 647-conjugated Anti-Human CD20 (CL647-60271, Clone:4A7G3) (red) or 0.20 ug control antibody (blue). Fixed with90% MeOH.