

À des fins de recherche uniquement

Anticorps Monoclonal anti-CD103

Numéro de catalogue: **CL647-65047**



Informations de base

Numéro de catalogue:

CL647-65047

Taille:

100tests , 5 µl/test

Hôte:

Hamster

Isotype:

IgG

Numéro d'acquisition GenBank:

BC150690

Identification du gène (NCBI):

16407

Nom complet:

integrin alpha E, epithelial-associated

Méthode de purification:

Purification par affinité

CloneNo.:

2E7

Excitation/Emission maxima wavelengths:

654 nm / 674 nm

Applications

Applications testées:

FC

Spécificité de l'espèce:

souris

Informations générales

CD103, also known as integrin alpha-E (ITGAE) or integrin alpha-IEL, is a type I transmembrane integrin protein that binds integrin beta 7 to form Integrin alpha-E beta-7 which is a receptor for E-cadherin and mediates adhesion of T lymphocytes to epithelial cells (PMID: 7969453; 8468482). CD103 is expressed on intraepithelial lymphocyte (IEL) T cells (both alpha/beta T cells and gamma/delta T cells), some peripheral regulatory T cells (Tregs), lamina propria T cells, and a subset of dendritic cells in the gut mucosa and mesenteric lymph nodes (PMID: 12242333; 15608520; 16216890).

Stockage

Stockage:

Store at 2-8°C. Avoid exposure to light. Stable for one year after shipment.

Tampon de stockage:

PBS avec azoture de sodium à 0,1 % et BSA à 0,5 %, pH 7,3.

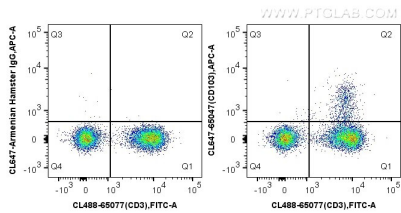
For technical support and original validation data for this product please contact:

T: 1 (888) 4PTGLAB (1-888-478-4522) (toll free in USA), or 1(312) 455-8498 (outside USA)

E: proteintech@ptglab.com
W: ptglab.com

This product is exclusively available under Proteintech Group brand and is not available to purchase from any other manufacturer.

Données de validation sélectionnées



1x10⁶ BALB/c mouse splenocytes were surface stained with 5 ul CoraLite® 488 Anti-Mouse CD3 (CL488-65077, Clone: 17A2) and CoraLite® Plus 647-conjugated Armenian Hamster IgG isotype control (left) or 5 ul CoraLite® Plus 647 Anti-Mouse CD103 (CL647-65047, Clone:2E7) (right). Cells were not fixed.