

À des fins de recherche uniquement

# Anticorps Monoclonal anti-CD107a / LAMP1



Numéro de catalogue: **CL647-65051**

1 Publications

## Informations de base

Numéro de catalogue: CL647-65051	Numéro d'acquisition GenBank: BC006345	Méthode de purification: Purification par protéine G
Taille: 100tests , 5 µl/test	Identification du gène (NCBI): 3916	CloneNo.: H4A3
Hôte: Mouse	Nom complet: lysosomal-associated membrane protein 1	Dilutions recommandées: IF 1:200-1:800
Isotype: IgG1, kappa		Excitation/Emission maxima wavelengths: 654 nm / 674 nm

## Applications

Applications testées: FC (Intra), IF	Contrôles positifs: IF : cellules HeLa,
Demandes citées: IF	
Spécificité de l'espèce: Humain	
Espèces citées: Humain	

## Informations générales

LAMP1 (CD107a) is a heavily glycosylated membrane protein enriched in the lysosomal membrane. LAMP1 is extensively glycosylated with asparagine-linked oligosaccharides which protect it from intracellular proteolysis (PMID: 10521503). Although LAMP1 is expressed largely in the endosome-lysosomal membrane of cells, it is also found on the plasma membrane (PMID: 16168398). Elevated LAMP1 expression at the cell surface has also been detected during platelet and granulocytic cell activation, as well as in some tumor cells (PMID: 29085473). LAMP1 functions to provide selectins with carbohydrate ligands. This protein has also been shown to be a marker of degranulation on lymphocytes such as CD8+ and NK cells and may also play a role in tumor cell differentiation and metastasis (PMID: 18835598; 29085473; 9426697).

## Publications notables

Autrice	Pubmed ID	Journal	Application
Zhensheng Zhang	37309040	J Zhejiang Univ Sci B	IF

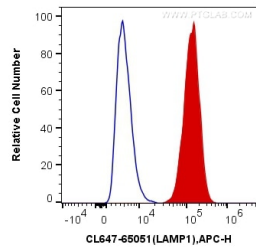
## Stockage

Stockage:  
Store at 2-8°C. Avoid exposure to light. Stable for one year after shipment.  
Tampon de stockage:  
PBS avec azoture de sodium à 0,1 % et BSA à 0,5 %, pH 7,3.

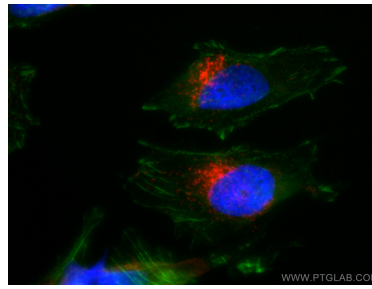
For technical support and original validation data for this product please contact:  
T: 1 (888) 4PTGLAB (1-888-478-4522) (toll free in USA), or 1(312) 455-8498 (outside USA)  
E: [proteintech@ptglab.com](mailto:proteintech@ptglab.com)  
W: [ptglab.com](http://ptglab.com)

This product is exclusively available under Proteintech Group brand and is not available to purchase from any other manufacturer.

## Données de validation sélectionnées



1X10<sup>6</sup> HeLa cells were intracellularly stained with 5 ul CoraLite® Plus 647 Anti-Human CD107a (CL647-65051, Clone:H4A3) (red), or Control Antibody. Cells were fixed with 4% PFA and permeabilized with Flow Cytometry Perm Buffer (PF00011-C).



Immunofluorescent analysis of (-20°C Ethanol) fixed HeLa cells using CoraLite® Plus 647-conjugated CD107a antibody (CL647-65051, Clone: H4A3) at dilution of 1:400. F-actin was stained using CL488-phalloidin (green) and DNA was stained by DAPI (blue).