

À des fins de recherche uniquement

Anticorps Monoclonal anti-CD107b / LAMP2



Numéro de catalogue: **CL647-65052**

Informations de base

Numéro de catalogue:

CL647-65052

Taille:

100tests , 5 µl/test

Hôte:

Rat

Isotype:

IgG2a, kappa

Numéro d'acquisition GenBank:

BC138718

Identification du gène (NCBI):

16784

Nom complet:

lysosomal-associated membrane protein 2

Méthode de purification:

Purification par affinité

CloneNo.:

ABL-93

Dilutions recommandées:

IF 1:50-1:500

Excitation/Emission maxima wavelengths:

654 nm / 674 nm

Applications

Applications testées:

FC (Intra), IF

Spécificité de l'espèce:

souris

Contrôles positifs:

IF : cellules NIH/3T3,

Informations générales

LAMP2 (CD107b) is a Lysosomal membrane glycoprotein. LAMP2 is extensively glycosylated with asparagine-linked oligosaccharides which protect it from intracellular proteolysis (PMID: 10521503). Although LAMP-2 is localized primarily in the endosome-lysosomal membrane of cells, it is also found on the plasma membrane under certain circumstances, e.g., after platelet activation, during granulocytic differentiation and activation, and in some tumor cells (PMID: 12221139). LAMP is involved in lysosomal stability and autophagy (PMID: 12221139). This glycoprotein provides selectins with carbohydrate ligands. LAMP2 may play a role in tumor cell metastasis (PMID 9426697).

Stockage

Stockage:

Store at 2-8°C. Avoid exposure to light. Stable for one year after shipment.

Tampon de stockage:

PBS avec azoture de sodium à 0,1 % et BSA à 0,5 %, pH 7,3.

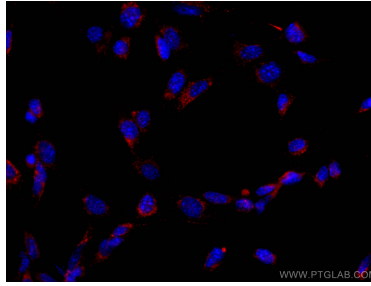
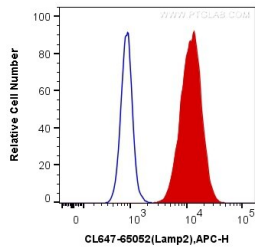
For technical support and original validation data for this product please contact:

T: 1 (888) 4PTGLAB (1-888-478-4522) (toll free in USA), or 1(312) 455-8498 (outside USA)

E: proteintech@ptglab.com
W: ptglab.com

This product is exclusively available under Proteintech Group brand and is not available to purchase from any other manufacturer.

Données de validation sélectionnées



1X10⁶ NIH/3T3 cells were intracellularly stained with 5 ul CoraLite® Plus 647 Anti-Mouse CD107b (CL647-65052, Clone:ABL-93) (red), or Control Antibody. Cells were fixed with 4% PFA and permeabilized with Flow Cytometry Perm Buffer (PF00011-C).

Immunofluorescent analysis of (-20°C Ethanol) fixed NIH/3T3 cells using CoraLite® Plus 647 CD107b antibody (CL647-65052, Clone: ABL-93) at dilution of 1:400.