

À des fins de recherche uniquement

Anticorps Monoclonal anti-CD107b / LAMP2



Numéro de catalogue: **CL647-65053**

Informations de base

Numéro de catalogue: CL647-65053	Numéro d'acquisition GenBank: BC002965	Méthode de purification: Purification par protéine G
Taille: 100tests , 5 µl/test	Identification du gène (NCBI): 3920	CloneNo.: H4B4
Hôte: Mouse	Nom complet: lysosomal-associated membrane protein 2	Dilutions recommandées: IF 1:50-1:500
Isotype: IgG1, kappa	MW calculé 45 kDa	Excitation/Emission maxima wavelengths: 654 nm / 674 nm

Applications

Applications testées: FC (Intra), IF	Contrôles positifs: IF : cellules HeLa,
Spécificité de l'espèce: Humain	

Informations générales

LAMP2 (CD107b) is a Lysosomal membrane glycoprotein. LAMP2 is extensively glycosylated with asparagine-linked oligosaccharides which protect it from intracellular proteolysis (PMID: 10521503). Although LAMP-2 is localized primarily in the endosome-lysosomal membrane of cells, it is also found on the plasma membrane under certain circumstances, e.g., after platelet activation, during granulocytic differentiation and activation, and in some tumor cells (PMID: 12221139). LAMP is involved in lysosomal stability and autophagy (PMID: 12221139). This glycoprotein provides selectins with carbohydrate ligands. LAMP2 may play a role in tumor cell metastasis (PMID 9426697).

Stockage

Stockage:
Store at 2-8°C. Avoid exposure to light. Stable for one year after shipment.
Tampon de stockage:
PBS avec azoture de sodium à 0,1 % et BSA à 0,5 %, pH 7,3.

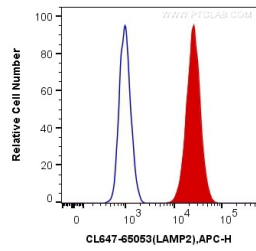
For technical support and original validation data for this product please contact:

T: 1 (888) 4PTGLAB (1-888-478-4522) (toll free in USA), or 1(312) 455-8498 (outside USA)

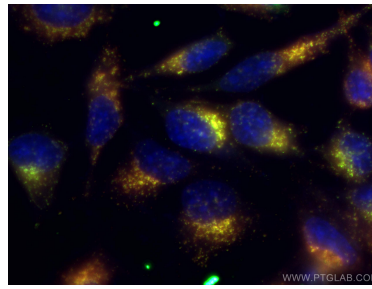
E: proteintech@ptglab.com
W: ptglab.com

This product is exclusively available under Proteintech Group brand and is not available to purchase from any other manufacturer.

Données de validation sélectionnées



1X10⁶ Jurkat cells were intracellularly stained with 5 μ l CoraLite® Plus 647 Anti-Human CD107b (CL647-65053, Clone:H4B4) (red) or Control Antibody. Cells were fixed with 4% PFA and permeabilized with Flow Cytometry Perm Buffer (PF00011-C).



Immunofluorescent analysis of (-20°C Ethanol) fixed HeLa cells using CoraLite® Plus 647-conjugated CD107b antibody (CL647-65053, Clone: H4B4) at dilution of 1:50 and CoraLite® 488-conjugated CD107a antibody (CL488-65051, Clone: H4A3, green) at dilution of 1:50.