

À des fins de recherche uniquement

Anticorps Monoclonal anti-CD31

Numéro de catalogue: CL647-65058



Informations de base

Numéro de catalogue:

CL647-65058

Taille:

100 tests, 5 µl/test

Hôte:

Rat

Isotype:

IgG2a

Numéro d'acquisition GenBank:

BC008519

Identification du gène (NCBI):

18613

Nom complet:

platelet/endothelial cell adhesion
molecule 1

Méthode de purification:

Purification par affinité

CloneNo.:

390

Dilutions recommandées:

IF 1:50-1:500

Excitation/Emission maxima
wavelengths:

654 nm / 674 nm

Applications

Applications testées:

IF, FC

Spécificité de l'espèce:

souris

Contrôles positifs:

IF : cellules bEnd.3,

Informations générales

Platelet endothelial cell adhesion molecule-1 (PECAM-1, CD31) is a member of the immunoglobulin gene superfamily of cell adhesion molecules. CD31 is a transmembrane glycoprotein that is highly expressed on the surface of the endothelium, making up a large portion of its intracellular junctions. PECAM-1 is also present on the surface of hematopoietic cells and immune cells including platelets, monocytes, neutrophils, natural killer cells, megakaryocytes and some types of T-cell (PMID: 9011572). As well as its role in cell-cell adhesion, PECAM-1 functions as a signaling receptor, and is involved in important physiological events such as nitric oxide production, regulation of T-cell immunity and tolerance, leukocyte transendothelial migration and inflammation and angiogenesis (PMID: 21183735; 20978210; 17872453; 20634489).

Stockage

Stockage:

Stocker à une température comprise entre 2 °C et 8 °C. Éviter toute exposition à la lumière.

Tampon de stockage:

PBS avec azoture de sodium à 0,1 % et BSA à 0,5 %, pH 7,3.

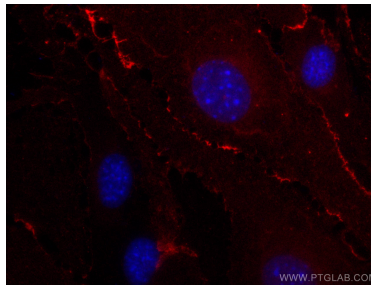
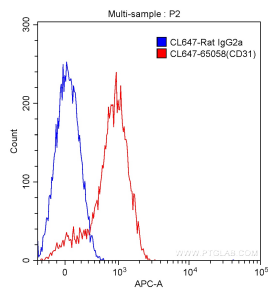
For technical support and original validation data for this product please contact:

T: 1 (888) 4PTGLAB (1-888-478-4522) (toll free
in USA), or 1(312) 455-8498 (outside USA)

E: proteintech@ptglab.com
W: ptglab.com

This product is exclusively available under Proteintech Group brand and is not available to purchase from any other manufacturer.

Données de validation sélectionnées



1X10⁶ C57BL/6 mouse splenocytes were surface stained with 5.00 ul/test CoraLite® Plus 647-conjugated Anti-Mouse CD31 (CL647-65058, Clone: 390) (red) or isotype control antibody (blue). Cells were not fixed.

Immunofluorescent analysis of (4% PFA) fixed bEnd.3 cells using CoraLite® Plus 647 CD31 antibody (CL647-65058, Clone: 390) at dilution of 1:100.