

À des fins de recherche uniquement

Anticorps Monoclonal anti-CD38

Numéro de catalogue: CL647-65059



Informations de base

Numéro de catalogue:

CL647-65059

Taille:

100 tests, 5 µl/test

Hôte:

Rat

Isotype:

IgG2a, kappa

Numéro d'acquisition GenBank:

BC046312

Identification du gène (NCBI):

12494

Nom complet:

CD38 antigen

Méthode de purification:

Purification par affinité

CloneNo.:

90

Dilutions recommandées:

IF 1:200-1:800

Excitation/Emission maxima
wavelengths:

654 nm / 674 nm

Applications

Applications testées:

FC, IF

Spécificité de l'espèce:

souris

Contrôles positifs:

IF : splénocytes de souris,

Informations générales

CD38, also known as ADP-ribosyl cyclase 1, is a type II transmembrane glycoprotein with a short N-terminal cytoplasmic tail, a single membrane-spanning domain, and a C-terminal extracellular region with four N-glycosylation sites (PMID: 2319135). The extracellular domain of CD38 has bifunctional enzyme activities that catalyze synthesis of cyclic ADP ribose from nicotinamide adenine dinucleotide (NAD) and hydrolysis of cyclic ADP ribose to adenosine diphosphoribose (PMID: 10636863). CD38 is expressed on a variety of hematopoietic and non-hematopoietic cells and is involved in diverse processes such as generation of calcium-mobilizing metabolites, cell activation, and chemotaxis (PMID: 25938500).

Stockage

Stockage:

Store at 2-8°C. Avoid exposure to light. Stable for one year after shipment.

Tampon de stockage:

PBS avec azoture de sodium à 0,1 % et BSA à 0,5 %, pH 7,3.

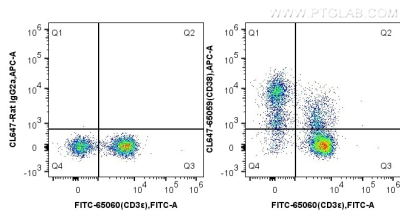
For technical support and original validation data for this product please contact:

T: 1 (888) 4PTGLAB (1-888-478-4522) (toll free
in USA), or 1(312) 455-8498 (outside USA)

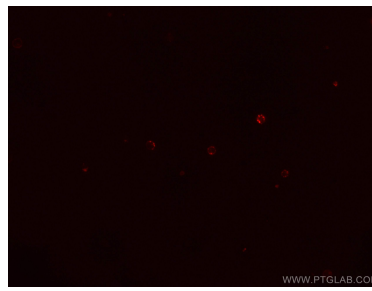
E: proteintech@ptglab.com
W: ptglab.com

This product is exclusively available under Proteintech Group brand and is not available to purchase from any other manufacturer.

Données de validation sélectionnées



1X10⁶ mouse splenocytes were surface stained with FITC Anti-Mouse CD3 ϵ (FITC-65060, Clone: 145-2C11) and CoraLite[®] Plus 647-conjugated Rat IgG2a isotype control (left) or 5.00 μ l CoraLite[®] Plus 647-conjugated Anti-Mouse CD38 (CL647-65059, Clone: 90) (right). Cells were not fixed.



Immunofluorescent analysis of mouse splenocytes using CoraLite[®] Plus 647-conjugated Anti-Mouse CD38 (CL647-65059, Clone: 90) at dilution of 1:400.