

À des fins de recherche uniquement

Anticorps Monoclonal anti-CD3 ϵ

Numéro de catalogue: CL647-65061



Informations de base

Numéro de catalogue:

CL647-65061

Taille:

100 tests, 5 μ l/test

Hôte:

Hamster

Isotype:

IgG

Numéro d'acquisition GenBank:

BC098236

Identification du gène (NCBI):

12501

Nom complet:

CD3 antigen, epsilon polypeptide

Méthode de purification:

Purification par affinité

CloneNo.:

500-A2

Dilutions recommandées:

IF 1:250-1:1000

Excitation/Emission maxima
wavelengths:

654 nm / 674 nm

Applications

Applications testées:

FC, IF

Spécificité de l'espèce:

souris

Contrôles positifs:

IF : splénocytes de souris,

Informations générales

CD3 is a multimeric protein associated with the T-cell receptor (TCR) to form a complex involved in antigen recognition and signal transduction (PMID: 15885124). CD3 is composed of CD3 γ , δ , ϵ , and ζ chains (PMID: 1826255). It is expressed by thymocytes in a developmentally regulated manner, T cells, and some NK cells (PMID: 3289580). The TCR recognizes antigens bound to major histocompatibility complex (MHC) molecules. TCR-mediated peptide-MHC recognition is transmitted to the CD3 complex, leading to the intracellular signal transduction (PMID: 11985657).

Stockage

Stockage:

Store at 2-8°C. Avoid exposure to light. Stable for one year after shipment.

Tampon de stockage:

PBS avec azoture de sodium à 0,1 % et BSA à 0,5 %, pH 7,3.

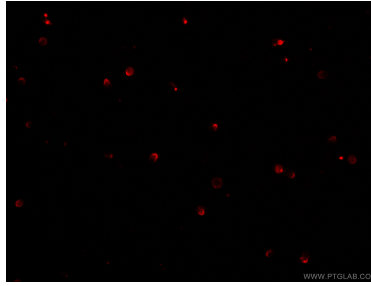
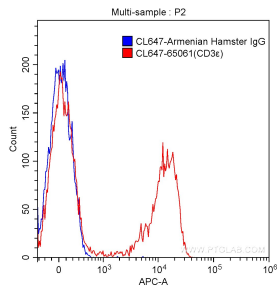
For technical support and original validation data for this product please contact:

T: 1 (888) 4PTGLAB (1-888-478-4522) (toll free
in USA), or 1(312) 455-8498 (outside USA)

E: proteintech@ptglab.com
W: ptglab.com

This product is exclusively available under Proteintech Group brand and is not available to purchase from any other manufacturer.

Données de validation sélectionnées



1X10⁶ C57BL/6 mouse splenocytes were surface stained with 5.00 ul CoraLite® Plus 647-conjugated Anti-Mouse CD3ε (CL647-65061, Clone: 500-A2) (red) or isotype control antibody (blue). Cells were not fixed.

Immunofluorescent analysis of mouse splenocytes using CoraLite® Plus 647-conjugated Anti-Mouse CD3ε (CL647-65061, Clone: 500-A2) at dilution of 1:500.