

À des fins de recherche uniquement

Anticorps Monoclonal anti-CD8a

Numéro de catalogue: **CL647-65069**



Informations de base

Numéro de catalogue:

CL647-65069

Taille:

100ug, 0.5 mg/ml

Hôte:

Rat

Isotype:

IgG2a, kappa

Numéro d'acquisition GenBank:

BC030679

Identification du gène (NCBI):

12525

Nom complet:

CD8 antigen, alpha chain

Méthode de purification:

Purification par affinité

CloneNo.:

53-6.7

Dilutions recommandées:

IF 1:250-1:1000

Excitation/Emission maxima
wavelengths:

654 nm / 674 nm

Applications

Applications testées:

FC, IF

Spécificité de l'espèce:

souris

Contrôles positifs:

IF : splénocytes de souris,

Informations générales

CD8 is a transmembrane glycoprotein composed of two disulfide-linked chains. It can be present as a homodimer of CD8a or as a heterodimer of CD8a and CD8β (PMID: 3264320; 8253791). CD8 is found on most thymocytes. The majority of class I-restricted T cells express mostly the CD8aβ heterodimer while CD8aa homodimers alone have been found on some gut intraepithelial T cells, on some T cell receptor (TCR) γδ T cells and on NK cells (PMID: 2111591; 1831127; 8420975). CD8 acts as a co-receptor that binds to MHC class-I and participates in cytotoxic T cell activation (PMID: 8499079). During T cell development, CD8 is required for positive selection of CD4-/CD8+ T cells (PMID: 1968084).

Stockage

Stockage:

Store at 2-8°C. Avoid exposure to light. Stable for one year after shipment.

Tampon de stockage:

PBS with 0.09% sodium azide.

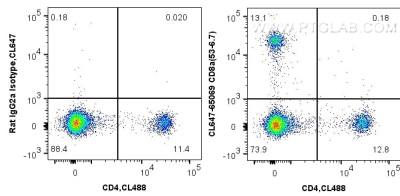
For technical support and original validation data for this product please contact:

T: 1 (888) 4PTGLAB (1-888-478-4522) (toll free
in USA), or 1(312) 455-8498 (outside USA)

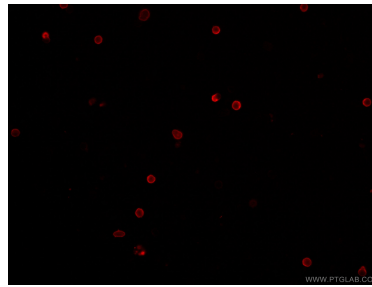
E: proteintech@ptglab.com
W: ptglab.com

This product is exclusively available under Proteintech Group brand and is not available to purchase from any other manufacturer.

Données de validation sélectionnées



1X10⁶ mouse splenocytes were surface stained with CoraLite® 488 Anti-Mouse CD4 (CL488-65104, Clone: GK1.5) and 0.25 ug CoraLite® Plus 647 Anti-Mouse CD8a (CL647-65069, Clone: 53-6.7) or CoraLite® Plus 647-Conjugated rat IgG2a isotype control. Cells were not fixed.



Immunofluorescent analysis of mouse splenocytes using CoraLite® Plus 647-conjugated Anti-Mouse CD8a (CL647-65069, Clone: 53-6.7) at dilution of 1:500.