

À des fins de recherche uniquement

Anticorps Monoclonal anti-Ly-6G

Numéro de catalogue: CL647-65078



Informations de base

Numéro de catalogue:

CL647-65078

Taille:

100 tests, 5 µl/test

Hôte:

Rat

Isotype:

IgG2a, kappa

Numéro d'acquisition GenBank:

X70920

Identification du gène (NCBI):

546644

Nom complet:

Lymphocyte antigen 6 complex, locus

G

Méthode de purification:

Purification par affinité

CloneNo.:

1A8

Excitation/Emission maxima

wavelengths:

654 nm / 674 nm

Applications

Applications testées:

FC

Spécificité de l'espèce:

souris

Informations générales

Ly-6G (lymphocyte antigen 6 complex, locus G), also known as Gr-1, is a 21-25 kDa, glycosylphosphatidylinositol-anchored protein expressed on myeloid lineage cells in mouse bone marrow (PMID: 8360469). The expression of Ly-6G increases on neutrophils as they differentiate from immature cells in the bone marrow to mature cells in the blood and spleen (PMID: 8890901). Antibodies targeting Ly6G (RB6-8C5 or 1A8) are commonly used in studies aimed at identifying the role of neutrophils (PMID: 23543767). The 1A8 mAb is specific for Ly-6G (PMID: 8360469).

Stockage

Stockage:

Store at 2-8°C. Avoid exposure to light. Stable for one year after shipment.

Tampon de stockage:

PBS avec azoture de sodium à 0,1 % et BSA à 0,5 %, pH 7,3.

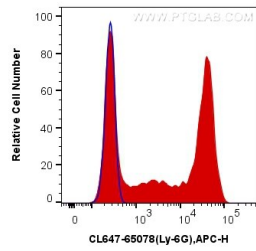
For technical support and original validation data for this product please contact:

T: 1 (888) 4PTGLAB (1-888-478-4522) (toll free in USA), or 1(312) 455-8498 (outside USA)

E: proteintech@ptglab.com
W: ptglab.com

This product is exclusively available under Proteintech Group brand and is not available to purchase from any other manufacturer.

Données de validation sélectionnées



1X10⁶ mouse bone marrow cells were surface stained with 5.00 ul CoraLite® Plus 647 Anti-Mouse Ly-6G (CL647-65078, Clone:1A8) (red) or isotype control (blue). Cells were not fixed.