

À des fins de recherche uniquement

Anticorps Monoclonal anti-PD-L1 (B7-H1)



Numéro de catalogue: **CL647-65081**

Informations de base

Numéro de catalogue:

CL647-65081

Taille:

100tests , 5 µl/test

Hôte:

Mouse

Isotype:

IgG2b

Numéro d'acquisition GenBank:

BC069381

Identification du gène (NCBI):

29126

Nom complet:

CD274 molecule

Méthode de purification:

Purification par affinité

CloneNo.:

29E.2A3

Excitation/Emission maxima
wavelengths:

654 nm / 674 nm

Applications

Applications testées:

FC

Spécificité de l'espèce:

Humain

Informations générales

Programmed cell death ligand 1 (PD-L1, CD274, or B7-H1), is the first member of B7 family to be discovered. B7 family molecules are type I transmembrane proteins belonging to the immunoglobulin superfamily. In concert with their CD28 family receptors, the B7s are key regulators of the adaptive immune response. PD-L1 is suggested as a negative regulator of T and B cell, and plays important role in mediating tolerance of lymphocytes to self-antigens. It is also involved in the costimulatory signal, essential for T-cell proliferation and production of IL10 and IFNG, in an IL2-dependent and a PD-1-independent manner.

Stockage

Stockage:

Stocker à une température comprise entre 2 °C et 8 °C. Éviter toute exposition à la lumière.

Tampon de stockage:

PBS avec azoture de sodium à 0,1 % et BSA à 0,5 %, pH 7,3.

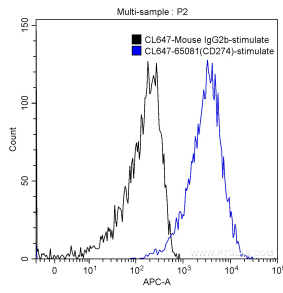
For technical support and original validation data for this product please contact:

T: 1 (888) 4PTGLAB (1-888-478-4522) (toll free
in USA), or 1(312) 455-8498 (outside USA)

E: proteintech@ptglab.com
W: ptglab.com

This product is exclusively available under Proteintech Group brand and is not available to purchase from any other manufacturer.

Données de validation sélectionnées



1X10⁶ PHA-stimulated (5 ug/ml, 3 days) human peripheral blood lymphocytes were surface stained with 5 ul CoraLite® Plus 647 Anti-Human PD-L1 (B7-H1) (CL647-65081, Clone: 29E.2A3) (blue) or isotype control (black). Cells were not fixed.